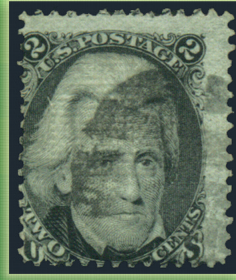


AUCTION

WED., MARCH 6, 2024 – 1:00



9



10



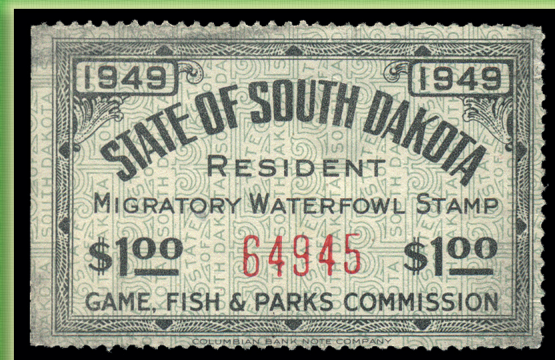
147



31



183



625

STILL ONLY 15% COMMISSION AND NO CREDIT CARD FEES!

Sam Houston Philatelics

SHPACTIONS.COM • HOUSTON, TEXAS

★ ★ CONDITIONS OF SALE ★ ★

1. All lots will be sold to the highest bidder, at one increment over the second highest bid. When sending bids, state the highest price you are prepared to pay; your limit will not be used unless absolutely necessary.

2. Bids are to be as per lots numbered in the catalogue and in full dollar amounts. SHP reserves the right to withdraw any lot prior to the sale closing, and/or reject unreasonable or questionable bids. Some lots may have a "Minimum Bid" (MB); bids less than the "MB" are respectfully declined. Opening bids and Prices Realized are available on our website shpauctions.com.

3. All lots are guaranteed genuine. Should a competent authority, such as the Philatelic Foundation, PSE, PSAG, or APS, prove any lot otherwise, SHP will reimburse purchaser for the cost of the item and certificate. SHP must be notified within 10 days of receipt of item of intent to obtain certificate. Stamps with existing certificates dated within five years of sale date are not eligible for returns if a different opinion is rendered. We do not guarantee our centering will concur with the PSAG/PSE/PF's system of grading. SHP is liable for certificate cost up to \$100 only; lots must be paid for in advance.

4. Lots are Not Returnable for the following reasons:

- A. Lot contains ten or more items.
- B. Lots were viewed by Purchaser or Agent.
- C. Lots described as having defects, faults or 'as is'.
- D. Lots photographed are not returnable for reason of centering, perforations, ccls, or visible faults.
- E. Lots bid on incorrectly, due to bidder error.
- F. Lots returned after 10 days of receipt for any reason.

5. Bids should be placed according to the following increments. Bids which do not conform to the above will automatically be reduced to the appropriate level.

Up to \$50	\$.25	\$400 to \$750	\$.25
\$50 to \$200	\$.50	\$750 to \$1500	\$.50
\$200 to \$400	\$.75	Over \$1500	\$.75

★ Over \$1500 also by Auctioneer's option

6. All Lots Payable Prior to Shipment, unless party is known to us, (in which case material will be shipped), and payment is expected within 10 days of receipt. Payment by cash, check, money order, drawn from a United States bank in U.S.

dollars. Credit cards accepted are VISA, MASTERCARD, DISCOVER & PAY PAL only. Invoice will include charge for postage & handling, and/or insurance, registration if required, plus 15% buyers commission. Texas state sales tax will be added where appropriate. Successful bidders must pay for lots within 10 days of receipt unless prior arrangements have been made. Unpaid for lots remain the property of SHP and in event of default by purchaser, will be resold with any loss arising being the responsibility of defaulter. Any account more than 30 days in arrears will be subject to 1½% per month late fee. Should legal action be required, defaulting purchaser is responsible for all such charges incurred.

7. Telephone Bids are acceptable, but must be confirmed in writing. Due to time constraints in taking lengthy bids over the phone, we prefer bids to be mailed, faxed, or e-mailed, reserving last minute bids and changes by phone. However, should a phone bid be necessary, we will be happy to cooperate.

8. Catalogue Values and Numbers are from the latest edition of Scott Catalogue. Estimates of the actual value may be more or less than catalog, and are located in the far right hand column. Scott provides a Supplemental Value Catalogue listing values for grades above and below very fine. In cases of PSE, PF, or PSAG graded stamps with certificates, the appropriate Scott SCV or PSE SMQ value for that grade is listed. "cv" at the end of each lot description indicates the catalog value. Sam Houston Duck Company's list has been used for catalog numbers and estimates of duck stamps, except for those with graded certificates as covered above. Other specialty catalogs used for otherwise unlisted issues are Ira W. Cotton, H. Richoux and D. Torre. Values provided are for bidder guidance, and actual realizations may vary.

9. Mint Stamps have Original Gum (OG) unless stated otherwise. Stamps listed as Unused will be without gum. See symbols (next page) for additional information. Never hinged (NH) stamps will be listed as such.

10. Cover Lots – When described, postal markings are graded by comparison to the illustrations in the American Stampless Cover Catalogue. Evidence of aging is to be expected on older material, especially stampless covers. Light toning, file folds and edge foxing are the rule rather than the exception, and lots are not returnable for these minor reasons. We do try to mention these characteristics in any event. More serious faults, such as major tears, missing flaps, or stains will be described within.

11. Placing of a bid constitutes acceptance of the conditions of sale. Bidding is a privilege ... and a contract. Review your bids carefully to avoid error. Lots are not returnable due to bidder error.

SHIPPING INFORMATION

Due to USPS delivery issues, all auction material shipments over \$100, will ship via traceable mail, below \$100 First Class Mail.
If you would like your items shipped by a different method, please specify

ABBREVIATIONS

addr. addressed	DG disturbed gum	mgn margin	saabv same as above
adhr. adherence	diag. diagonal	ms manuscript ccl	sba signed by artist
adv advertising	dlc double line circle	MS mint stamp	SB Starting Bid
ALS autograph ltr sgnd	dlo/do double line oval/oval	nat'l natural	SCV Scott Catalog Value
appr. appearance	DPO Dead Post Office	nfai no folio as issued	SE straight edge
APS Amer. Phil. Soc	DS document signed	NG no gum	selv selvage
AS artist signed	ECV estimated cat. value	ngai no gum as issued	sep. separation
attr. attractive	env envelope	ngb natural gum bend	SFL stampless folded letter
avg average	ex example	ngc natural gum crease	sgl single
B/Btm bottom	FC Front Cover Photo	ngs natural gum skip	sgnd. signed
BC Back Cover Photo	ff file fold	npi natural paper inclusion	sig signature
bklt booklet	FL folded letter	NH never hinged	SL straight line
blk block/black	flt fault	omob owner's mark on back	sm small
b/s backstamped	fog fingerprint on gum	OG original gum/hinged	sp short perforation
ccl ccl	HHR heavy hinge remnant	PB Plate Block	SP/SPL sgnd photo / inser'b'd
ccr corner crease	horz. horizontal	PFC Phil. Foundation Cert.	S/S souvenir sheet
c/c corner card	HR hinge remnant	PG partial gum	stn stain
cds circular date stamp	H/hvy heavy	PH photograph	T top
cert certificate	HS hand stamped	ph previously hinged	th thin/thinned
cnr corner	IBC Inside Back Cover PH	pl plate	tn'd/g. toned/toning
cntr'd/g centered/centering	IFC Inside Front Cover PH	pnb pencil note on back	TLS typed letter signed
cond condition	impt imprint	PNS plate number single	tr tear/torn
CPH Color Photo	incl including	pos. position	UL/UR upper left/upper right
cr crease	L left	ppc picture postcard	var. variety
cv catalog value	LH lightly hinged	pr pair	vert vert
cvr cover	LL/LR lower left/lower right	PSE Professional Stp. Exp.	VLH very lightly hinged
dbl double	LP line pair/guide line pr	R right	w/; w/o with; without
dc double circle	lrg large	RG regummed	wmk watermark
defin definitive	lt/lgt light	rfp, rperf reperf/forated	

— IMPORTANT INFORMATION —

View photos online: StampAuctionNetwork.com and SHPAuctions.com

For those of you who do not bid on-line, please let us know if you have any requests for photos. (Limit 15.)

*Thank you for your interest in Sam Houston Philatelics.
GOOD LUCK IN OUR AUCTION!*

METHODS OF BIDDING

LIMIT BIDDING

When placing a limit on the amount you wish to "win," restrict your bids to no more than twice the amount of your total limit. For example, if you set a limit of \$500, the total amount of your bids should not exceed \$1,000. If you mail your bidsheet, please signify your limit, or if you email or use the Internet, also please signify your limit.

"OR" BIDDING

You may bid on two or more lots, or more, within reason. Remember that you will only win ONE of the lots. Specify the lots by writing "or" between the lot numbers for which you are placing bids. The system picks the lot you are most likely to "win".

TIE BIDDING

A lot is awarded to the first bid received. Be timely on getting your bids to us. We accept bids via fax, phone, email, bidding on shpauctions.com or StampAuctionNetwork.com (SAN), or through the mail.

OPENING BIDS

The "Opening Bid" you see on our site or SAN, is one increment above the second highest bid. If you see that the opening bid is higher than your bid, you will need to raise your bid. If the opening bid is lower than your bid, you are most likely the high bidder.

UPDATES ON YOUR BIDS

You will receive a confirmation that we have received your bids when bidding on SAN or shpauctions.com. If we have a valid email on file, you will receive updates on where your bids stand.

FIVE WAYS TO BID

Phone: (281) 493-6386 or Toll-Free (800) 231-5926
 Fax: (281) 496-1445
 Web: StampAuctionNetwork.com or shpauctions.com
 Email: auctions@shpauctions.com
 Mail: Sam Houston Philatelics
 P.O.Box 820087, Houston, TX 77282-0087

IMPORTANT: Bids for either-or lots will be accepted ONLY with the understanding that one bid will be posted to the lot, which would have the best chance of winning at the time.

CENTERING ★ SYMBOLS ★ COLORS

Avg Average, perfs touch
 Fine Perfs clear
 F-VF Fine to Very Fine
 VF Very Fine
 XF Extremely Fine
 XF-SUP Extra Fine to Superb
 SUP Superb
 GEM 100 Best Grade Possible

★ Mint Hinged
 ★★ Mint Never Hinged
 ⊙ Used
 (★) Unused, no gum, regummed
 // Incomplete Set
 L License
 ☐ Cover
 — Mint & Used
 ♦ PSE, PF, or PSAG Graded cert

c with certificate (ungraded)
 Brn Brown
 Car Carmine
 Grn Green
 Org Orange
 Ver Vermilion
 Ultra Ultramarine

BOB DUMAINE, President

RITA DUMAINE, VP - Auctioneer #14049

Sam Houston Philatelics, Inc.

Phone 281-493-6386
 Fax 281-496-1445
 Email auctions@shpauctions.com

LICENSED AND BONDED AUCTIONEER
 14780 Memorial Dr. Ste #110 Houston, Texas 77079
 This firm complies with A.S.D.A. Q.P.A. Code of Ethics
 Michelle Dumaine Dyson ★ Stephen Ferrell ★ Mike Yenik ★ Kay Dyson

SHPACTIONS.COM
 View and bid on-line.

U.S. CLASSICS

- 1 ★ **63 1¢ Blue**, Avg OG, with sweated gum cv (\$275) . PH \$175
- 2 ○ **69 12¢ Gray Black**, F-VF, with light lower left corner crease cv (\$105) PH \$75
- 3 ○ **70 24¢ Red Lilac**, Avg, with light ccl cv (\$300) PH \$160
- 4 ○ **72 90¢ Blue**, Fine-Avg cv (\$600) PH \$400
- 5 ○ **73 2¢ Black**, F-VF, postally Used, short perf at bottom and couple at top cv (\$60) PH \$40
- 6 c○ **76 5¢ Brown**, F-VF, reperfed at right, with blue cds ccl at left and (3) blue target ccls at right. 2023 Crowe certificate cv (\$130) PH \$100
- 7 ○ **77 15¢ Black**, Average, postally Used, with black and red cancels, tiny tear in the perfs at right side cv (\$225) PH \$175
- 8 ○ **78b 24¢ Dark Gray**, Fine-Avg, with few sp's and circular grid ccl, 2011 Weiss certificate cv (\$450) PH \$250

GRILLED ISSUES

- 9 ○ **85B 2¢ Black, Ty II, "Z" Grill**, Avg, with 14x18 grill and obvious horizontal ridges, plus sharp image! cv (\$1100) PH \$600
- 10 ★ **88 3¢ Rose Red, "E" Grill**, Fine-Avg OG, with pnb, 1996 APEX certificate; extremely scarce! cv (\$1050) PH \$650
- 11 ○ **91 15¢ Black, "E" Grill**, Fine-Avg, with nice circle of wedges ccl, small tear at top and with strong grill cv (\$575) PH \$300
- 12 ○ **93 2¢ Black**, Just Fine, postally used, pnb, couple shortish perfs cv (\$55) \$40
- 13 ○ **96var 10¢ Green, "F" Grill, Very Thin paper variety**, Fine-Avg, with SON "circle of wedges" fancy ccl cv (\$270) PH \$175
- 14 ○ **97 12¢ Gray Black, "F" Grill**, Fine-Avg, with small, light lower left corner crease and fancy geometric cancel; clean and fresh cv (\$250) PH \$170

1869 PICTORIALS

- 15 ○ **113 2¢ Brown**, Just Fine, postally Used, nice strike, light unobstrusive ccl cv (\$80) PH \$65
- 16 ○ **116 10¢ Yellow**, F-VF, rebacked with faults, but very nice appearance cv (\$110) PH \$30
- 17 ○ **117 12¢ Green**, F-VF, with light black and red ccls cv (\$280) PH \$250
- 18 ○ **117 12¢ Green**, F-VF, with straight edge at left, light SON target ccl cv (\$130) PH \$90
- 19 ○ **119 15¢ Brown and Blue, Ty II**, F-VF, postally Used, small thin in middle cv (\$190) PH \$90
- 20 ○ **120 24¢ Green and Violet**, Avg, with two small tears at right edge, target ccl and strong color cv (\$650) . PH \$250

BANKNOTES

- 21 ○ **134A 1¢ Ultramarine, "I" Grill**, 10x13 point grill, Fine-Avg, with circular grid ccl cv (\$400) PH \$240
- 22 ○ **151 12¢ Dull Violet**, Avg, postally Used, (3) creased perfs at top cv (\$200) PH \$100
- 23 ○ **151 12¢ DULL VIOLET (8) EXAMPLES**, red cancel, blue cancel, Fine-Avg, some faults, nice overall appearance cv (\$1345) PH \$700
- 24 ○ **153 24¢ Purple**, Avg, postally Used, couple "shortish" perfs at top cv (\$210) PH \$140
- 25 ○ **163 15¢ Yellow Orange**, Just Fine, postally Used, (4) creased perfs, pnb cv (\$150) PH \$115
- 26 ○ **165 30¢ Gray Black**, VF, with short perforation and light cancel cv (\$135) PH \$125

COLUMBIAN ISSUES

- 27 ★ **230-34 1¢-5¢ Columbians (5)**, Fine to F-VF OG, all ph, 5¢ with double transfer visible throughout all numbers and letters, fresh colors cv (\$236) \$175
- 28 ★★ **239 30¢ Columbian**, Fine NH cv (\$675) PH \$450
- 29 ★ **240 50¢ COLUMBIAN**, XF-Superb LH, gorgeous stamp! cv (\$450) PH \$1250
- 30 ★ **240 50¢ Columbian**, F-VF OG, with light toning, otherwise sound and nice cv (\$450) PH \$350

1894-8 ISSUES

- 31 ★★ **252 2¢ CARMINE, TY III, LEFT SIDE PLATE STRIP OF 3, PLATE #142, WITH BUREAU IMPRINT**, Fine-Avg NH, very scarce! cv (\$1400) PH \$850

TRANS-MISSISSIPPI

- 32 - **285-91 1¢-50¢ Trans-Mississippi, Set of (7)**, F-VF LH/ mixed mint/used; 1¢, 2¢, 5¢ and 50¢ LH; 4¢, 8¢, 10¢ used, F-VF group in mounts on partial album page; good colors, sound, bargain! cv (\$859) PH \$550

PAN AMERICAN

- 33 ○/★ **294-99 1¢-10¢ Pan-Americans, Complete Set of (6)**, F-VF, mix of postally Used (5) and one OG (5¢), 10¢ has thin cv (\$179) PH \$120
- 34 ★ **294-99 1¢-10¢ Pan-Americans, Set of (6)**, 1¢ and 2¢ with nice black color shifts, 10¢ SE at left, Fine-Avg to F-VF OG cv (\$382) PH \$250

AUCTION CLOSING WEDNESDAY, MARCH 6, 2024, 1 P.M. CENTRAL TIME

LOUISIANA PURCHASE

- 35 ◎/★ **323-27 1¢-10¢ La. Purchase, Compete Set of 5**, Fine to F-VF, with 1¢-5¢ postally Used and 10¢ OG; no. 323 Fine, 324 F-VF and SE on right, 325 is Fine with tiny thin at tip of nose, 326 F-VF with pulled perf at lower left and no. 327 has SE at right and adhesion on gum at top (suspect old album page) and a few short perfs at top cv (\$281) PH \$145
- 36 ★★ **324 2¢ La. Purchase, Left Side Arrow Block of 4**, F-VF NH, with (2) hinge marks in left selvage only, stamps NH cv (\$295) PH \$240
- 37 ★★ **326 5¢ La. Purchase, Block of 4**, F-VF NH, with light horizontal nbg in upper right stamp; deep rich color and strong image cv (\$770) PH \$650
- 38 ★★ **328-330 1¢-5¢ Jamestown Exposition Set (3)**, no. 328 NG, 329 slightly yellowed OG, full gum (which is somewhat toned), and the 330 is gorgeous; bright, deep color, OG with small gum skips, all F-VF cv (\$490) PH \$395

WASHINGTON/FRANKLIN ISSUES

- 39 ◎/★ **331-42 1¢-\$1.00 1908 Regular Issues**, F-VF (3¢ Avg), postally Used except 13¢ (no. 339) OG cv (\$176) PH \$150
- 40 ★★ **373 2¢ Hudson-Fulton Imperf, Imperforate Horizontal Pair**, VF NH cv (\$88) PH \$85
- 41 ★★ **386 2¢ Carmine, Paste-up single**, F-VF NH cv (\$200) PH \$280
- 42 ★ **395 4¢ Brown, Coil Pair, 3mm spacing**, F-VF OG/HR, beautiful color and white paper cv (\$150) PH \$120
- 43 ★★ **396 5¢ Blue, Coil Pair**, F-VF NH, strong, rich color cv (\$375) PH \$300
- 44 ★★ **402 2¢ Bright Carmine**, F-VF NH cv (\$170) PH \$125
- 45 ★ **414 8¢ OLIVE GREEN**, XF-Superb LH cv (\$45) PH \$125
- 46 ★ **415 9¢ Salmon Red**, XF VVLH, bright fresh color cv (\$50) PH \$90
- 47 ★★ **441-2 1¢ Green and 2¢ Carmine Ty I, Coil Paste-Up Pairs**, 1¢ F-VF NH and 2¢ VF-XF NH; cv for normal pairs cv (\$61) PH \$75
- 48 ★★ **450 2¢ Carmine, Ty III, Joint Line Pair**, F-VF NH cv (\$550) PH \$500
- 49 ★★ **452 1¢ Green, Coil Joint Line Pair**, Fine NH cv (\$190) PH \$125
- 50 ★★ **455 2¢ Carmine, Ty III**, F-VF NH cv (\$43) PH \$40
- 51 ★★ **455 2¢ Carmine, Ty III, Coil Line Strip of 4**, Fine NH cv (\$141) PH \$125
- 52 ★★ **493 3¢ Violet, Ty I, Coil Pair**, Fine NH, two inconspicuous toning spots at left cv (\$75) PH \$40
- 53 ★ **500 2¢ Deep Rose, Ty Ia**, Fine LH, with pencil notation on back "#499d/Pos. 58". 499d was the Scott# assigned to the Ty Ia, when first discovered. Gorgeous, bright color cv (\$260) PH \$180

1918-20 OFFSETS & 1924-29 ISSUES

- 54 ★★ **527 2¢ Carmine, Type V, Top Plate Block of 6 no. 11186**, F-VF NH, perfs clear on all stamps, well-centered for issue cv (\$350) PH \$300
- 55 ★★ **537 3¢ Violet**, XF NH, has pre-printing paper fold at top giving a slight crease, 2005 PSE certificate for block of 4, this the upper left stamp cv (\$20) PH \$14

1922 REGULAR ISSUES

- 56 ★★ **571 1¢ Violet Black, Top Block of 4, Plate no. F 18680**, F-VF NH cv (\$320) PH \$300
- 57 ★★ **630 2¢ Battle of White Plains, Lower Left Souvenir Sheet of 25, PI #18771**, F-VF NH, with light diagonal bend in lower left corner margin cv (\$500) PH \$400

KANSAS-NEBRASKA OVERPRINTS

- 58 ★★ **661 3¢ Kansas Overprint**, Just Fine NH cv (\$35) \$25
- 59 ★ **664 6¢ Kansas Overprint**, Fine VLH cv (\$25) \$18
- 60 ★ **668 10¢ Kansas Overprint**, Avg OG cv (\$22) \$12
- 61 ★ **669-79 1¢-10¢ Nebraska Overprint Issues**, complete set of 11, Fine-Avg to F-VF OG, except 10¢ used with very light ccl cv (\$198) PH \$140
- 62 ★ **674 5¢ Nebraska Overprint**, Just Fine OG cv (\$15) \$10

1930 TO DATE

- 63 (★) **735 3¢ Byrd Souvenir Sheet of 6**, VF-XF, ngai, NH cv (\$10) \$10
- 64 ♦★★ **809 4 ½¢ Dark Gray**, XF 90 NH, 2015 PSE graded certificate, SMQ (\$12) \$12
- 65 ♦★★ **827 22¢ Vermilion**, XF 90 NH, 2007 PSE graded certificate, SMQ (\$12) \$12
- 66 ♦★★ **890 2¢ Rose Carmine**, XF-Superb 95 NH, 2007 PSE graded certificate, SMQ (\$12) \$12
- 67 ♦★★ **989 3¢ National Capital Sesquicentennial**, XF-Superb 95 NH, 2006 PSE graded certificate, SMQ (\$25) \$25
- 68 ♦★★ **1016 3¢ Red Cross**, XF-Superb 95 NH, 2006 PSE graded certificate, SMQ (\$25) \$25
- 69 ♦★★ **1021 5¢ Opening of Japan Centennial**, XF-Superb 95, 2014 PSE graded certificate, SMQ (\$25) \$25
- 70 ♦★ **1200 4¢ Senator Brien McMahon**, SUPERB 98 OG, 2014 PSE graded certificate states "...previously hinged", which appears to be a fingerprint and small glazed spot from a mount, SMQ (\$60) \$30
- 71 ♦★★ **2152 22¢ Korea War Veterans**, XF 90 NH, 2021 PSE graded certificate, SMQ \$18
- 72 ♦★★ **2439 25¢ Idaho Statehood Centennial**, XF 90 NH, 2021 PSE graded certificate, SMQ \$15
- 73 ♦★★ **2537 52¢ Love**, GEM 100 NH, 2014 PSE graded certificate, only two stamps graded 100 on the POP Report! No SMQ PH \$185

15% COMMISSION ADDED TO ALL LOTS.

- 74 ♦♦♦ **2816 29¢ Dr. Allison Davis**, GEM 100 NH, 2011 PSE graded certificate, no SMQ PH \$165
- 75 ♦♦♦ **2836 50¢ 1994 World Cup Soccer Championships**, GEM 100 NH, 2011 PSE graded certificate, no SMQ PH \$145
- 76 ♦♦♦ **3273 33¢ Malcolm X**, GEM 100 NH, 2011 PSE graded certificate, no SMQ PH \$155

EXPOSITION MATERIAL

- 77 - **1898 Trans-Mississippi Expo Souvenir Medallion**, 38mm diameter, obverse with large building with lagoon in front with boats reading "INTERNATIONAL EXPOSITION/OMAHA/LAGOON". Reverse with woman, building, train and medical symbol, reading "TRANS-MISSISSIPPI & INTERNATIONAL EXPOSITION/1898/OMAHA/U.S.A.". Unfortunately, it has been 3-holed to create a button; otherwise great condition and scarce piece PH \$40
- 78 - **1901 Pan-American Exposition Encased Coin Token**, aluminum disc with 1901 Indian Head penny in center. Obverse: design of 4-leaf clover with "GOOD LUCK SOUVENIR/PAN-AMERICAN EXPOSITION/BUFFALO, N.Y.". Reverse: 2 opposite facing horseshoes encircling the penny with "LUCKY PENNY"/"I'M IT/POCKET PIECE". The penny was already in the aluminum disc before the designs were crimped in, because the 4-leaf clover design continues into the penny's rim PH \$40
- 79 ☐ **324 2¢ La. Purchase Exposition Issue on World's Fair cover**, faulty (opened at R with scissors which trimmed stamp on upper right side), addressed, has Samuel Cupples Envelope Co. cachet of "FOUNDING OF ST. LOUIS 1784" caption, stamp tied to cvr with duplex ccl. "MASON CITY/JUN/30/230PM/1904/ILL." Address is in Fisk, Wis and receiving pmk on reverse is "FISK/JUL/2/1904/WIS." Cover inscribed in red at bottom "WORLD'S FAIR ST. LOUIS, 1904". Beautiful multi-color cachet only by Cupples for the Exposition; not with standing the rough opening, cover in excellent condition PH \$100
- 80 ♦♦ **1935 California Pacific International Exposition Sheet of 25 Poster Stamps**, F-VF NH, all with various scenes from the Expo or of the San Diego area. Scenes including U.S. Navy ships in the harbor, a lion from the zoo, World's largest outdoor organ, Expo buildings, orange groves, etc. The sheet advertises the Expo, with official seal at lower left, title at bottom center and photographer and printer at lower right. Beautiful coloration and design; about 10" x 8" PH \$40
- 81 ♦♦ **1939 New York World's Fair Exposition Pane of 54 different labels**, VF NH, multi-colored, each label depicting buildings, statues or exhibits. Pristine pane about 15" x 14". Great ephemera item from this popular exposition PH \$50
- 82 - **New York World's Fair 1964-5 Souvenir**, 48mm (1 15/16") diameter blue and white plastic disk with 1964 Roosevelt dime inserted. Obverse: "N.Y. WORLD'S FAIR 1964-1965/NEUTRON IRRADIATED DIME". Reverse: "ATOMIC ENERGY COMMISSION/ UNITED STATES OF AMERICA". PH \$30

LITERATURE

- 83 - **"India Used Abroad" paperback book by Vispi S. Dastur, 1981, 253 pages.** This is good book illustrating the usages of India stamps and covers used in Nepal, Tibet and other countries, as well as usages from various Dutch, French and Portugese settlements, well illustrated and indexed. Very useful book for the specialist and seldom seen in America. Good condition with no underlining or highlighting \$15

COVERS

- 84 ☐ **Small accumulation (7) of stampless covers**, Family/Personal correspondence circa 1850's, with postmarks from Boston, MA, Cambridgeport, MA and Middletown, Con. Different styles of franking are included with Black Blue and Red shown, along with differing fonts. Condition is very good generally with small creases and torn flaps from the sealing wax though (1) Boston cover opened roughly and part of the flap is missing. Pencil notes on front possibly indicating the year \$35
- 85 ☐ **25 3¢ Brownish Carmine, Ty I, on cover**, Avg, tied with DES MOINES/Iowa cds ccl, cover with rough edges, addressed to Joseph Howe/Methuan/Massachusetts, ccl date either MAR/23 or MAY/23 cv (\$375) PH \$250
- 86 ☐ **147 3¢ Green**, F-VF, straight edge at right, on yellow cover with Masonic "Eye in the Pyramid" fancy ccl. Cover also with "BUFFALO/NY/DEC/12" cds ccl. Clean and fresh, circa 1870 PH \$50
- 87 ☐ **182-3 1¢ Gray Blue and 2¢ Vermilion on Advertising Cover**, 1¢ F-VF with upper right corner crease; 2¢ VF, tall stamp, both tied with Boston 4/17/82 duplex ccls. Upper left embossed "L.FRED'K RICE,/ARCHITECT/ AND/CIVIL ENGINEER/9 PEMBERTON SQ./BOSTON". Cover opened roughly at right cv (\$12) PH \$20
- 88 ☐ **247 1¢ Blue Pair on commercial cover**, Average, postmark circular date stamp "ABILENE/MAR/?/4PM/1898/TEX", addressed to "HAROLD EXCHANGE/9 E. 108th St./N.Y. CITY." Attractive multi-color corner card "RETURN TO/THE TEXAN PHILATELIST,/ABILENE, TEXAS". Walter C. Lowry published "The Texan Philatelist" from 1894 to 1899. Cover has back stamp circular date stamp "U/3-11-98/9-A/N.Y." opened neatly at top, but starting to lose paper upper right corner, also a small tear on right side and bottom left edge, envelope somewhat fragile PH \$75
- 89 ☐ **319 2¢ Carmine on Advertising Cover**, stamp F-VF faulty, tied to cover with "WEST BADEN/IND./1904/JUN/29/7AM" cds ccl. Large advertisement at left of a huge building with flag above each tower and dome. In box at right, "The Carlsbad of America,/WEST BADEN MINERAL SPRINGS,/WEST BADEN,/Orange County, Indiana." Opened roughly at right; reverse with same day receiving ccl from Louisville, KY PH \$25
- 90 ☐ **1633-82, 1953-2002 America's Fifty States Commemorative Cover Collection in padded leatherette album with gold lettering**, each cover franked with various U.S. flag stamps on the anniversary of their admittance to the Union. Each cachet denotes the state and contains the appropriate mint stamp from the State Flags issue and the State Birdss and Flowers issue, plus a card with state facts. Extremely nice with typed address \$50

TIE BIDS ARE AWARDED TO THE FIRST BID RECEIVED.

- 91 **2384 25¢ Packard Classic Automobile on Event Cover**, F-VF, unaddressed, cachet by artist Robert Loomis depicting the St. Matthew Station USPS Post Office. Special event cancellation with pictorial and text "ST. MATTHEW STATION/HISTORIC DEDICATION/OCTOBER 28, 1988/SAN MATEO, CA 94401" for the dedication into the NATIONAL REGISTER OF HISTORIC PLACES." Envelope mounted in program folder \$10
- 92 **U58 3¢ Pink, Postal Envelope**, VF, with 4-blade propeller type fancy ccl, addressed to "Mrs. Seletia Dowdle/Ft. Gates/Coryelle County/Texas". "Ft. Gates" and "Coryelle" are marked out and "St. Antonio" and "Bexar" are added. Then "St. Antonio" is marked out and "Bellmont" added. Cancels and markings including "CANTON/MISS(?) /NOV/13" cds ccl; "SAN ANTONIO/TEX/MAR/29" cds ccl; and "FORWARDED" with underline and overline hs. Late 1860's usage (probably 1866 or 67), very slow travel (4 months) and forwarded twice PH \$20
- 93 **Great Britain 61 3p Rose, PI #12, Pos. E-H, on Commercial Cover to Colorado Territory**, XF, with large right margin, tied to cover by 3 ccls: 1) "LONDON-E.C/X/MR 17/74"; 2) "72" in oval grid ccl; and 3) faint red "CHICAGO, ILL./APR/3/PAID ALL" (Norona #F-2) cds ccl. Cover with blue "BROWN, SHIPLEY & Co./17 MAR. 74/ LONDON" double oval hs at top and addressed to "John W. Oothout Esq/Denver/Colorado Territory/United States of America". Cover opened roughly at right, stamp sound and design clear of perfs cv (\$195) PH \$225
- 94 **FAM-14 First Flight Extension Covers (8)**, each on Pan American Airways System comcard advertising airmail covers, AAMC #F14-20 to F14-24 and F14-24-c for the new flight from San Francisco to Singapore and back. Only 4,000 sets of 8 created. Nice, clean complete set cv (\$40) ex PH \$40
- 95 **1909 \$9.35 Bald Eagle and Moon on STS-8 Flight Cover**, XF, unaddressed, with multi-colored NASA/USPS cachet, flown aboard the "USS Challenger" space shuttle, which exploded 2½ years later, with original folio number 230482. COSMOS Cat #1800A PH \$125
- 96 **C14 \$1.30 Graf Zeppelin on flown cover**, Sieger no. 64.G cv € 650. about \$800, stamp VF, tied with May 30, 1930 Lakehurst, NJ machine ccl; Lakehurst to Friedrichshafen flight, with German and U.S. cachets (lightened) and all appropriate markings PH \$650

PICTURE POSTCARDS

- 97 - **Rijks Museum Book of Color Postcards**, (24) picture postcards of museum masterpieces ready to mail, in excellent condition with the tiniest of wear on front cover ex PH \$24

FIRST DAY COVERS

- 98 **752 3¢ Washington's Headquarters at Newburgh on FDC**, F-VF, with violet 1st Hubbard cachet (Mell. #752-16) and neatly typed violet address cv (\$70) PH \$70
- 99 **777 3¢ Rhode Island Tercentenary on FDC**, F-VF, addressed in ink, Washington Stamp Exchange (Ralph Dyer) cachet (Mellone 777-2), very slight overall toning and a gentle crease lower left. Postmark cds "PROVIDENCE/ MAY4/9-AM/1936/R.I." with 7-bar wavy line killer cv (\$84) PH \$75

- 100 **798 3¢ Constitution Block of 4 on FDC**, F-VF, typed address, F.R. Rice cachet (Mellone no. 798-49a-Airmail Envelope). Postmark cds Philadelphia, PA FDOI cancel, condition is excellent, minor toning cv (\$54) PH \$54
- 101 **802 3¢ Virgin Islands on FDC**, VF, addressed, cachet by Wm. Raley (Mellone no. 802-62a.1, Blue and Purple), postmark Charlotte Amalie FDOI cancel. Condition is very good with a few stray ink marks and small rubber stamp "OSHKOSH COVERS" on back cv (\$50) ... PH \$50
- 102 **831 50¢ Mauve on airmail FDC**, F-VF, addressed in ink script, Crosby photo cachet (Mellone no. 831-38b), good condition, heavy adhesive toning on back with bleed through, VLH marks on flap cv (\$125) PH \$105
- 103 **832 \$1.00 Purple and Black on registered airmail FDC**, F-VF, addressed in ink script, Crosby photo cachet (Mellone no. 823-38b), fair condition, heavy adhesive toning on back with bleed through, slight crease at top, small tear on left edge, VLH marks on flap cv (\$300) PH \$250
- 104 **833 \$2.00 YELLOW GREEN AND BLACK ON REGISTERED FDC**, VF, addressed in neat ink script, Crosby photo cachet (Mellone no. 822-38b), good condition, heavy adhesive toning on back with bleed through, tiny "dings" in upper left and lower left corners cv (\$1250) PH \$1000

- 105 **836 3¢ Swedes and Finns on FDC**, F-VF, addressed in ink script, Crosby photo cachet (Mellone no. 836-7a.2) good condition, minor creasing at corners, heavy adhesive toning on back with bleed through cv (\$150) PH \$120
- 106 **854 3¢ George Washington Inauguration on FDC**, VF, unaddressed, Crosby photo cachet, Mellone no. 854-9e, condition is good, has heavy adhesive toning with bleed through cv (\$175) PH \$175
- 107 **856 3¢ Panama Canal on FDC variety**, F-VF, neat ink script address, Crosby photo cachet in silver, same as Mellone no. 856-1e.1, but not gold, good condition with light adhesive toning and bleed through, small crease in flap when sealed and hinge mark at top of flap cv (\$180) PH \$200
- 108 **856 3¢ Panama Canal on FDC**, F-VF, neat ink script address, Crosby photo cachet, Mellone no. 856-1d.1 (has maroon ink, not gold), good condition, heavy adhesive toning with bleed through cv (\$240) PH \$180
- 109 **924 3¢ Telegraph Centennial, (2) FDC's**, VF, both FDOI locations: Wash., D.C. and Baltimore, MD. Each with Capt. Crosby photo cachets (Mell #924-20 and 28) and neat typed address cv (\$144) PH \$140

- 110 **2381-85 25¢ Classic Automobiles First Day Maxicards**, VF, published by USPS, very nice renditions of these classic cars. Very clean and unaddr cv (\$8) . PH \$8
- 111 **2599//3331 1994-1999 Hand-Colored FDC's (17)**, all unaddressed with Dynamite Covers, cachets and numbered on back. Contains #2599; 2814C; 2867; 2891; 2919; 2954a; 3053; 3066; 3090; 3104; 3105h, i, m; 3183g; 3186d; 3186i, 3187d; 3220; and 3331. Beautiful group ex PH \$45

MEMORABILIA, ODDS & ENDS

- 112 **(President) Woodrow Wilson (1856-1924 Black Engraved Print on 8x11" cream India paper**, mounted on 11x14" white sunken card, signed G.F.C. Smillie - 1916 in design. Blue control no. stamped on back (775592) with date July 8-1916. Upper left corner has crease and small crease bottom left corner. Wilson was the 28th President PH \$175

- 113 - **1815 Magdalen Island 1¢ Token**, 34mm, copper, Quebec, Canada, obverse: a seal and "MAGDALEN ISLAND TOKEN/1815"; reverse depicts a filleted cod and "SUCCESS TO THE FISHERY/ONE PENNY". VG. Breton #520, Token catalog #TC-106712. These are quite rare in Fine condition or better PH \$350
- 114 - **1848 Presidential Medal for General Zachary Taylor**, 24mm diameter, copper, reeded edge, obverse with picture of General Taylor and reads "HERO OF PALO ALTO.RESACA DE LA PALMA.MONTEREY.AND BUENA VISTA/1847/MAJOR-GENERAL ZACHARY TAYLOR". Reverse with U.S. emblem (eagle, shield, arrows and olive branch) and "UNITED STATES OF AMERICA/1847". This is DeWitt-ZT-1848-21 and was distributed in 1848 when Zachary Taylor was running for U.S. President, which race he won, becoming our 12th President. The medal touts his victories in the Mexican-American War. About VF-30 PH \$175
- 115 - **Civil War Patriotic Token**, Fuld #66/370a, copper, 19.5mm diameter, obverse with Indian Head in head-dress, 13 stars and "1863"; reverse with wreath and "NOT/ONE/CENT". Appears AU-55 PH \$30
- 116 - **Civil War Patriotic Token**, Fuld #168/311a, copper, 18mm diameter depicting a cannon with 10 cannonballs, 13 stars around and "1863" at bottom. Reverse with wreath, crossed swords at bottom and "ARMY/&NAVY" in center. Minor rim dings PH \$12
- 117 - **Civil War Patriotic Token**, Fuld #178/267a, copper, 18mm diameter, front reads "THE FEDERAL UNION IT MUST BE PRESERVED/1863" depicting a man on a rearing horse. Reverse with wreath around sides and shield at bottom, "OUR/UNION" in center PH \$20
- 118 - **Civil War Store Card Token**, obverse: "HUSSEY'S/SPECIAL MESSAGE POST/50 Wm. St./N. YORK" with an old train locomotive and an engineer; reverse: "TIME IS MONEY./1863/EXPEDIENCY with a mail rider on a running horse. (AU) Almost Uncirculated 19.5mm diameter copper token. Hussey' Post local stamps are listed in the Scott catalog as #87L1-77 from 1856-1888. Token #630AK-1a in the Krause Token catalog PH \$25
- 119 - **Civil War Token**, copper, 20.5mm diameter, obverse: "J.T.SMITH/JEWELER/WHITEWATER/WIS."; reverse: "ALL WORK WARRANTED/1863" with a clock face pictured in center. Krause Token cat. #960C-1a, estimated condition XF-45/VF-35. Most details are very sharp! PH \$50
- 120 - **Civil War Store Card Token**, Rulau #975L-1a, 18mm diameter, copper, obverse with large boot and reads "BOOTS AND SHOES MADE TO ORDER" around rim, Fuld #1317a; reverse with "C. ROTH/MANUF'R./AND DEALER/IN BOOTS/AND SHOES/WOOSTER,/OHIO". Fine PH \$10
- 121 - **Texas Token, aluminum, 35mm diameter**, obverse: "W.A. MORGAN & BROS./PLUM,/TEXAS."; reverse: "GOOD FOR/100/IN MERCHANDISE". Plum is in Fayette County just west of La Grange. Token reverse is well worn, grade roughly VF-35/F-25, all readable. Seldom seen PH \$35
- 122 - **1908 50¢ Stewart Brothers Token**, copper, 32mm diameter, obverse: 15 stars around edge with bust of George Washington in center and "1908" at bottom; reverse: "GOOD FOR 50¢ ON/PURCHASES/WHERE/ \$10.00 IS PAID IN/CASH/CARPETS STOVES &FURNITURE/STEWART BROS./DUNKIRK IND." XF PH \$15
- 123 - **Ingle System Token circa 1915**, nickel plated brass, 21mm diameter, obverse: "C.W.EHLINGER/10" with 6 stars; reverse: "IN TRADE ONLY/PAT. APR. 7, 1914/10 /Ingle/SYSTEM". Token catalog #TC-134854 from Ellinger, TX \$10
- 124 - **Free Palmolive Soap Bar Token, circa 1928**, 35mm diameter with plain edge. Obverse: GOOD FOR/ONE CAKE/PALMOLIVE/SOAP FREE/WHEN YOU BUY/ONE CAKE". Reverse: "TO DEALERS/THIS CHECK WILL BE/REDEEMED AT YOUR/RETAIL PRICE AND ONLY/ WHEN CONDITIONS ON/THE REVERSE SIDE HAVE/ BEEN COMPLIED WITH/THE PALMOLIVE-PEET CO./ CHICAGO/P-1009." PH \$12
- 125 - **Automobile Token**, circa 1950's, 25.5mm diameter, copper, obverse with Indian head and "PONTIAC/CHIEF OF THE SIXES"; reverse with "PRODUCT/OFF/ GENERAL/ MOTORS" and makers mark "WHITEHEAD-HOAG". "C" of "CHIEF" is double-printed variety. About VF-30 PH \$18
- 126 - **Encased Postage Token, Political Advertising**, 1972 Lincoln 1¢ in aluminum disc. Obverse: "THANKS FROM RALPH M. HALL/DEMOCRAT/FOR LT. GOVERNOR OF TEXAS". Reverse: "ELECT RALPH M. HALL/YOUR LT. GOVERNOR/"ALL FOR HALL/FROM ROCKWALL". He didn't win, but was TX State Senate 1968-73 and U.S. House of Representatives 1981-2015 PH \$15
- 127 - **Xena Warrior Princess, Season One Limited Edition Commemorative Coin**, Uncirculated, pristine, 1996 PH \$15

AIRMAIL ISSUES

- 128 ⊙ **C1-6 6¢-24¢ Airmails (6)**, Fine to F-VF, postally used set, few small faults cv (\$175) \$110
- 129 ⊙ **C1 6¢ Orange**, F-VF, postally Used with New York double oval ccl cv (\$30) \$25
- 130 ⊙ **C5 16¢ Dark Blue**, F-VF, postally Used cv (\$30) \$25
- 131 ★ **C5 16¢ Dark Blue**, Avg OG, slightly ragged perfs on left side, great color cv (\$60) \$40
- 132 ⊙ **C6 24¢ Carmine**, F-VF, postally Used with straight edge on left cv (\$30) \$22
- 133 ★★ **C10 10¢ Lindbergh**, Just Fine NH, good color cv (\$12) . \$8
- 134 ⊙ ⊙ **C17 8¢ Winged Globe**, VF 80, 2007 PSE graded certificate, SMQ PH \$12
- 135 ★★ **C24 30¢ Winged Globe, Vertical Pair**, F-VF NH, toned cv (\$22) \$16
- 136 ⊙★★ **C38 5¢ Bright Carmine**, SUPERB 98 NH, 2009 PSE graded certificate, SMQ (\$85) \$85
- 137 ⊙★★ **C40 6¢ Alexandria Virginia**, GEM 100 NH, 2010 PSE graded certificate, SMQ (\$200) \$200
- 138 ⊙★★ **C44 25¢ 75th Anniversary U.P.U.**, SUPERB 98 NH, 2009 PSE graded certificate, SMQ (\$70) \$70
- 139 ⊙★★ **C45 6¢ Wright Bros.**, XF-Superb 95 NH, 2006 PSE graded certificate, SMQ (\$25) \$25
- 140 ⊙★★ **C57 10¢ Liberty Bell**, XF-Superb 95 NH, 2006 PSE graded certificate, SMQ (\$25) \$25
- 141 ⊙★★ **CE1 16¢ Dark Blue**, SUPERB 98 NH, 2011 PSE graded certificate, SMQ (\$95) \$95

SPECIAL DELIVERY

- 142 ○ **E1-19 1885-1951 Special Delivery (19)**, F-VF to VF, bright colors cv (\$440) PH \$350
- 143 ○ **E1-5 10¢ Special Delivery Issues, First (5)**, F-VF, postally Used, small faults, all fresh colors! cv (\$297) PH \$175
- 144 ○ **E3 10¢ Orange (5)**, F-VF to VF, with moderate ccls cv (\$250) PH \$220
- 145 ○ **E4 10¢ Blue**, F-VF, postally Used, rounded lower left corner cv (\$110) PH \$75
- 146 ** **E6 10¢ Ultramarine**, F-VF NH, has pulled perf above "E" in "UNITED" cv (\$500) PH \$300
- 147 ♦** **E9 10¢ ULTRAMARINE**, GEM 100 JUMBO ph, 2022 PSE graded certificate, 100 JUMBO is the highest grade possible with only (2) recorded; both previously hinged, SMQ (\$1250) PH \$1250
- 148 * **E12 10¢ Gray Violet**, F-VF OG/HR, good color and impression cv (\$45) PH \$34
- 149 ** **E14-23 10¢-60¢ Special Delivery Issues (11)**, VF-XF NH, includes no. 15a-10¢ Red Lilac cv (\$17) \$14
- 150 ♦** **E14 20¢ Black**, XF 90 NH, stamp with "a vertical natural gum skip", 2011 PSE graded certificate, SMQ (\$35) \$35
- 151 ♦** **E15 10¢ Gray Violet**, XF-Superb 95 NH, 2015 PSE graded certificate, SMQ (\$50) \$50
- 152 ♦** **E18 17¢ Orange Yellow**, XF 90 NH, 2008 PSE graded certificate, SMQ (\$20) \$20
- 153 ○ **F1 10¢ Registration**, F-VF, postally Used cv (\$14) \$14
- 154 ♦** **F1 10¢ Registration**, VF-XF 85 JUMBO NH, 2013 PSE graded certificate, "with a natural gum skip", SMQ (\$260) PH \$260

POSTAGE DUE

- 155 ○ **J2 2¢ Brown**, F-VF Used cv (\$25) \$16
- 156 ○ **J27 30¢ Bright Claret**, Fine OG/LH, very light ccl, centering is close at top and left cv (\$225) PH \$200
- 157 ○ **J31 1¢ Deep Claret**, Fine, very light ccl, wide right margin cv (\$12) \$8
- 158 ** **J77 \$1.00 Carmine**, VF NH cv (\$65) PH \$65
- 159 * **J85a 30¢ Scarlet**, Fine OG cv (\$8) \$4
- 160 ** **J85a 30¢ Scarlet**, XF NH cv (\$12) PH \$25

OFFICIALS

- 161 ○ **O81 30¢ Treasury**, Avg, postally Used, a bend/crease along right side cv (\$12) \$6
- 162 ** **O127//135 1¢-\$5.00 1983 Great Seal Official Mail Issues**, VF NH, excludes O129A issued in 1985 cv (\$15) \$15
- 163 ** **O129A/O161 Accumulation of 1985-2006 Official Mail stamps (32)**, F-VF NH, missing O130-35, 138, 151, 157-60; includes O139 PNS of 3 #1 (cv \$15) cv (\$38) PH \$30

- 164 ** **O133 \$5.00 Red, Blue and Black, Plate Block of 4 no.'s 1, 2, 3, and 4**, F-VF NH, complete of the four plates used cv (\$180) PH \$180
- 165 ** **O138 (14¢) Red, Blue and Black, Postal Card Rate D, Lower Right Plate Block of 4 no. 3**, F-VF NH cv (\$27) . \$25
- 166 ** **O139 (22¢) Official, Plate no. Coil Strip of 5 #1**, VF-XF NH cv (\$30) \$35

BACK OF BOOK

- 167 (*) **PR4 5¢ Light Blue, Pos. 1**, Fine-Avg Unused, ngai, with tear at upper right cv (\$900) PH \$400
- 168 ○ **Q1//12, QE1-4 Parcel Post Set of (35) Used stamps**, Q1//12 (11) stamps (no Q10), second group 1¢-15¢ (13) stamps, and QE1-4 (10) stamps, all postally used, F-VF mostly, some fits to be expected cv (\$204) PH \$120
- 169 * **Q1//Q11 1¢-75¢ Parcel Post Issues (9)**, (ex 20¢ & 50¢), F-VF OG ph and a couple with HR and natural gum skip or DG, Q11 faulty and value not counted, has tear in middle of stamp, but not too bad a filler, cv for Q1-8 cv (\$300) PH \$250
- 170 (*) **LO6 1¢ Blue Eagle Carrier Issue**, Fine-Avg Unused, ngai, two bottom corner perf creases with strong color cv (\$175) PH \$75
- 171 ** **R733 10¢ Violet Blue and Bright Green, Lower Right Plate Block of 4 no. 168105**, F-VF NH cv (\$15) \$15
- 172 ** **IL-C32 ILLINOIS 20 CIGARETTE 1967 FLOOR TAX STATE REVENUE DECALS, COMPLETE BKLT/400**, VF NH in four panes of 100, stapled at T, PI no. 300723-300726, each vertical pane of 100 contains (10) sections of (10) decals in a 5x2 format with horizontal roulette perfs between each section. Some perf seps between fifth and sixth sections where booklet was folded. A very scarce and unusual piece. CV is for individual singles, as listed in the SRS catalog cv (\$1200) \$1500

- 173 ○ **IN B1, 22, 28b Indiana 1939-46 Beer Tax Stamps (3)**, attractive, clean group used by three different companies cv (\$62) PH \$50
- 174 - **MI FE7//13 Michigan State 1939 Feed Tax Stamp Lot**, contains a partial mint pane of 50 #FE8, plus mint singles #FE7 (3), 10, 11b and 13 (two of these with no gum) cv (\$57) \$50
- 175 ** **WS12 10¢ Rose Red, Coil Line Pair**, SUPERB NH cv (\$11) PH \$60
- 176 ** **WS12var 10¢ Rose Red, Coil Line Strip of 5 with Partial Plate no. 153286, plate no. above center stamp and above right stamp of the line pair**, F-VF NH, very seldom seen! PH \$60
- 177 ** **WS13 25¢ Dark Blue Green**, XF-Superb NH cv (\$22) PH \$50
- 178 (*) **O90-91P4 15¢ and 24¢ Rose, Plate Proofs on Card**, VF-XF, ngai, 15¢ with heavy HR, scratch at top and small stains on left, nice margins on both items cv (\$20) \$12
- 179 - **B117 BEP 1998 ANA (American Numismatic Association) Show Proof - State Shields in blue, show cancelled**, same franking on card and folio, nos. 807 and 2360. Excellent condition, folio with tiny wrinkle upper left corner PH \$135

YOU MUST BID TO WIN!
CHECK OPENINGS DAILY - StampAuctionNetwork.com or SHPAuctions.com

180 ★★ TD107e 1962-88 BLACK COIL TEST STAMPS, ROLL OF 3,000 UNOPENED, centering appears VF-XF, untagged, NH cv (\$3000) PH \$1500

ERRORS, FREAKS AND ODDITIES

181 ○ 149var 7¢ Vermilion, F-VF, with light upper left corner crease and black and red cancels. Stamp has extra frameline at right and at bottom, plus an extra partial frameline near edge of bottom perfs. Very unusual stamp cv (\$110) PH \$90

182 ★/★★ 294-95var 1¢ and 2¢ Pan-Americans (10), all with color shifts of ship/locomotive, F-VF, (5) NH, (5) LH cv (\$245) PH \$325

183 (★) 296a 4¢ PAN-AMERICAN, CENTER INVERTED ERROR, VF RG, 1976 Philatelic Foundation certificate stating "genuine, regummed strengthening a horizontal crease and with two small thin spots." According to the Scott "Catalogue of Errors", 17th Edition, 2019, they are "usually encountered with small faults or DG...value is for an example with usual small faults." Also, it notes that only (97) are known to exist. VERY RARE! cv (\$80000) PH \$50000

184 ★★ 565var 14¢ Deep Blue, Bottom Plate Block of 6 no. 15797, VF NH, with offset printing of PI no. 14526 on reverse selvaige cv (\$120) PH \$150

185 ★★ 603var 10¢ Orange, Line Strips of 5 (2), each with partial Plate no's at top, no's 16341 and 16342, according to Specialist Collector's notations, F-VF NH cv (\$146) PH \$200

186 ★★ 807avar 3¢ Thomas Jefferson, (16) Booklet Panes of 6, all with 50% PI no. 22170 Upper Left, Fine to F-VF NH, fresh! cv (\$136) PH \$300

187 ★★ 839var 1¢ Green, Joint Line Pair with Partial Plate No., F-VF NH, about 20% partial no. of which there appear to be (5) possibilities, 23839, 23633, 23393, 23389 and 23388 cv (\$2) \$10

188 c★★ 909c 5¢ POLAND OVERRUN COUNTRY MAJOR ERROR, NAME BLOCK OF 20 REVERSE PRINTING OF FLAG COLORS, RED OVER BLACK, VF-XF NH, 2006 PFC, Scott lists mint examples at \$25 each. This showpiece block of 20 are all mint NH with name block, perhaps unique! Great opportunity to own a very popular issue and major error! cv (\$500) PH \$1000

189 ★★ 1475var 8¢ Love, Lower Left Pane of 50 no. 33931-33, Horizontal Misperf and Unusual Printer/Gripper marks below most stamps, NH PH \$250

190 ★★ 2835var 40¢ World Cup Soccer, Horizontal Pair with Vertical Gutter Between, Imperforate, SUPERB NH PH \$300

191 ★★ 3632var 37¢ Flag, Miscut Coil Strip of 3 and 7/8 each of two more stamps, NH, miscut so that "37" "USA" and "2002" at top of stamp (instead of bottom) and small traces of "37" at bottom PH \$40

192 ★★ C16var 5¢ Violet, Winged Globe, Upper Left Pane of 50 PI. #20606 and with (2) ghost PI no's above the third row (#20606) and the fourth row (#20607), VF NH, missing the tiny piece of lower left corner margin selvaige. A very nice early airmail sheet, seldom seen. CV is for normal Plate Block and singles cv (\$486) PH \$550

CONFEDERATE STATES

193 ☒ CSA 7a 5¢ Deep Blue on thick local paper, Horizontal Pair on cover, both stamps destroyed, pencil note "Nov. 21, 1863" and address to "Mrs. Andrew E. Dowdell/ Gatesville/Coryelle Co./Texas." and a partial barred grid ccl on right stamp (probably a Canton, Miss. ccl) cv (\$300) PH \$50

194 ☒ CSA 1864 Texas Confederate Stampless Folded Letter, with "ALTO/TEX" cds ccl at left and ms "12" inside. Also, with ms "paid 10" in upper right corner, addressed to "Mrs. S.C. Dowdle/Gatesville/Coryell Co/ Tex." Contains 3-page letter from David M. Dowdle (Dowdell) (signed twice with different spellings). Talks of Gen. Taylor being relieved of command, Gen. Smith, Col. King becoming Brig. Gen., various family and friends, his health and to returning back to war soon. Very scarce postal usage, Texas history and Civil War. Transcript made PH \$250

195 ☒ CSA 11c 10¢ Greenwich Blue, Right Side Margin Single on Homemade Cover, Texas Usage, four margins with crease in top margin and minor lower left corner crease and with 2-line ms ccl. Cover with "Wheelock/ Apl 1/65" 2-row ms ccl at left of stamp and addressed to "Mr. A.E. Dowdell/Gatesville/Coryelle Co./Texas" (A.= Andrew). Cover in fair condition, but a very scarce piece of Texas philately PH \$200

GENERAL FOREIGN

196 ☒ Austria 559 1949 UNICEF Issue FDC, unaddressed with Vienna (Wein) cds dated 14.v.49, cachet of children, UNICEF and UN symbols, pencil note on front (cat. no.) and minor ink smudge on back. Also, tiny stain mark on front and minor crease lower right corner cv (\$40) \$30

197 ○ Belgium 24a 1c Gray, Perf 15, Just Fine, postally Used cv (\$16) \$12

198 ★/★★ Belgium 79//81, B7-8 5c and 10c Brussels Exhibition Issue and 5c and 10c St. Martin of Tours Semi-Postal issues, VF, mix VLH (nos. 79, B7, B8) and NH (nos. 81 (2) and B7) cv (\$14) \$14

199 ★ Belgium 189 5fr Emerald 1926-27 Definitive, F-VF OG, with pencil notation on back cv (\$33) \$24

200 ★ Belgium B48-50 5c + 5 to 15c + 15 7th Olympic Games Issues, 5c and 15c F-VF and 10c Avg OG cv (\$6) \$6

201 - Bulgaria H&G 15g 5s Green, 1896 Postal Card of Crown Prince Boris in Dark Red and Green, mint and in excellent condition PH \$30

202 ○ Cameroun 55 1p on 10pf Carmine, F-VF, postally Used with heavy bridge cds ccl "13-10-15" date cv (\$11) \$8

203 ○ Canada 25 3¢ Red, F-VF Used, clipped upper left corner, perf crease upper right corner and tiny tear slightly toned (SG#58) cv (\$40) PH \$15

204 ○ Canada 74-84, 77a 1/2¢-20¢ 1898-1902 QV Numeral Issues (12), F-VF to XF, nice set but 1/2¢ with clipped perfs at upper left cv (\$257) PH \$200

205 ★ Canada 141-148 1¢-20¢ 1927 Commemorative Issues, F-VF to VF-XF OG cv (\$82) \$65

15% COMMISSION ADDED TO ALL LOTS.

- 206 ☉/★ **BC-PC Canada - British Columbia Private Courier Cinderellas, Set of 5**, 1982 (hinged) pony, 1984 (hinged) squirrel, 1983 stamps with 1985 overprint (lightly cancelled) garfish, 1988 (hinged) huskey, and 1989 (hinged) Labrador Retriever. Attractive set, F-VF PH \$20
- 207 ★★ **China, People's Republic of (PRC) 606-9 4f-20f Ancient Bridges (S50)**, VF to XF NH, complete set of 4 cv (\$69) \$65
- 208 ★★ **CHINA, PEOPLE'S REPUBLIC OF (PRC) 716- 731 4f-50f 1963 HWANG SHAN LANDSCAPES (S57)**, complete set of 16, F-VF to XF NH, beautiful and very popular set cv (\$1750)ex PH \$1750
- 209 ★★ **China, People's Republic of (PRC) 1047- 52 8f "Taking Tiger Mountain by Strategy" Opera (N1)**, complete set of 6, VF to XF NH cv (\$274) PH \$250
- 210 ★★ **China, People's Republic of (PRC) 1054- 57 4f-22f 1971 Centenary of Paris Commune (N3)**, VF to XF NH, complete set of 4 cv (\$399) PH \$375
- 211 ★★ **CHINA, PEOPLE'S REPUBLIC OF (PRC) 1067- 75 4f-22f 50TH ANNIVERSARY OF CHINESE COMMUNIST PARTY (N4)**, complete set of 9 and 1072-4 are intact horizontal strip of 3 (1074a), VF to XF NH cv (\$705) PH \$700
- 212 ★★ **China, People's Republic of (PRC) 1076- 79 8f-43f Afro-Asian Table Tennis Games (N5)**, F-VF to XF NH, nice fresh set cv (\$198) PH \$190
- 213 ★★ **China, People's Republic of (PRC) 1090- 1094 8f Physical Fitness**, complete set of 5, F-VF to VF-XF NH cv (\$141) PH \$140
- 214 ★★ **China, People's Republic of (PRC) 1095- 98 8f Commercial Ships (N7)**, complete set 4, XF NH cv (\$220)PH \$200
- 215 ★★ **China, People's Republic of (PRC) 1099- 1102 8f-22f 1st Asian Table Tennis Championship (N11)**, F-VF to VF-XF NH, complete set of 4 cv (\$98) PH \$95
- 216 ★★ **China, People's Republic of (PRC) 1103 8f Wang Chin-hsi**, XF NH cv (\$65) PH \$65
- 217 ★★ **China, People's Republic of (PRC) 1104- 7 8f Red Flag Canal Construction in Honan (N12)**, complete set of 4, F-VF to VF-XF NH cv (\$140) PH \$140
- 218 ★★ **China, People's Republic of (PRC) 1114- 16 8f Working Women's Day (N15)**, VF to XF NH cv (\$59) .. PH \$55
- 219 ★★ **China, People's Republic of (PRC) 1122- 25 8f-22f Asian, African and Latin American Table Tennis Friendship Invitational Tournament (N20)**, FV-VF to XF NH cv (\$55) PH \$55
- 220 ★★ **China, People's Republic of (PRC) 1131- 42 4f-52f Excavated Works of Art**, complete set of 12, F-VF to XF NH cv (\$70) PH \$70
- 221 ★★ **China, People's Republic of (PRC) 1143- 48 8f Gymnastics (T.1)**, F-VF to XF NH, complete set of 6, beautiful colors cv (\$65) PH \$65
- 222 ★★ **China, People's Republic of (PRC) 1149- 54 8f Traditional Acrobatics, (T.2)** complete set of 6, F-VF to XF NH cv (\$48) \$48
- 223 ★★ **China, People's Republic of (PRC) 1190- 93 8f Bare-foot Doctors (N18)**, XF NH cv (\$75) PH \$75
- 224 ★★ **China, People's Republic of (PRC) 1194- 98 8f Workers of Taching (T.4)**, F-VF to XF NH including (2) oil related stamps; complete set of 5 cv (\$45) PH \$45
- 225 ★★ **China, People's Republic of (PRC) 1204 8f Coat of Arms and Ethnic Groups (J.2)**, VF-XF NH cv (\$40) PH \$45
- 226 ★★ **China, People's Republic of (PRC) 1211- 14 8f Industrial Machines (N17)**, all VF to XF NH, bright colors and white paper cv (\$360) PH \$350
- 227 ★★ **China, People's Republic of (PRC) 1215- 17 8f 4th National People's Congress (J.5)**, F-VF to XF NH cv (\$61) PH \$60
- 228 ★★ **China, People's Republic of (PRC) 1222- 27 8f-43f Wushu Exercises (T.7)**, VF to XF NH cv (\$41) .. .ex PH \$40
- 229 ★★ **China, People's Republic of (PRC) 1228- 31 8f Campaign to Criticize Lin Piao and Confucius, XF NH cv (\$79) PH \$75**
- 230 ★★ **China, People's Republic of (PRC) 1232- 38 8f and 35f 3rd National Sports Meet, (J.6)** complete set of 7, F-VF to XF NH cv (\$42) \$42
- 231 ★★ **China, People's Republic of (PRC) 1271- 74 8f Achievements in Medical and Health Services, (T.12)** complete set of 4, F-VF to VF-XF NH cv (\$50) \$50
- 232 ★★ **China, People's Republic of (PRC) 1281- 85 8f Proletarian Education System, (T.18)** complete set of 5, F-VF to VF-XF, minute foxing in 1 or 2 cv (\$63) ... PH \$50
- 233 ★★ **China, People's Republic of (PRC) 1307- 9 8f Liu Hu-Lan (J.12)**, F-VF to XF NH cv (\$37) PH \$37
- 234 ★★ **China, People's Republic of (PRC) 1354- 56 8f 11th National Congress of Communist Party of China**, VF to XF NH cv (\$48)ex PH \$48
- 235 ★★ **China, People's Republic of (PRC) 1357- 62 8f 1st Anniversary of Mao-Tse-Tung's Death**, complete set of 6, VF to XF NH cv (\$45)ex PH \$45
- 236 ★★ **China, People's Republic of (PRC) 1389- 98 4f-70f Horses**, complete set of 10, VF to XF NH, popular set cv (\$72)ex PH \$70
- 237 ☐ **China, People's Republic of 1859-63 (PRC) 8f-70f and (2) Souvenir Sheets on FDC's (2)**, VF, unaddressed, official China Post cachets, all tied to covers with pictorial First Day of Issue (1983-6-30) cancel, covers in very good condition, but have a couple stains from "mishaps"ex PH \$50
- 238 ☉ **Cuba 232c 1c on 3c Purple, Double Surcharge ERROR**, Fine-Avg with missing lower left corner, large repaired vertical tear and light cancel. Nice filler of this scarce error cv (\$200) PH \$40
- 239 ★★ **Czechoslovakia 41 1h Dark Brown, Full Pane of 100**, F-VF NH, pane has all margins, a few perf separations at edges in margin, some wear and tear at top and bottom edges; pane is folded in half. CV for (100) 1h is \$25.00 as singles cv (\$25) \$40
- 240 - **Ecuador 1093-7, 1138-41 Two Official First Day Souvenir Packs**, consisting of Unused (though stuck down) stamps, FDC, cld Souvenir Sheet and Post Office information bulletin \$10
- 241 ★★ **France 615a 15fr and 25fr 1949 Centenary of 1st French Postage Stamps**, VF NH, strip of 4 and label damaged by perf separations, otherwise very nice cv (\$14) \$12

CHECK OPENINGS: StampAuctionNetwork.com or SHPAuctions.com

242	☒	France 625-628 10fr-50fr 1949 International Telephone and Telegraph Congress Issues on FDC , all VF, tied with Paris FDOI ccls on blue cover to USA. Very clean and nice PH \$50
243	★★	France 1014-17 50c to 1fr 1961 Paintings Issue , F-VF NH, has DG from soft black stock card (slight residue) cv (\$10) \$10
244	★★	France 1024var 25c Ultramarine, Carmine and Brown, Vertical Coil Strip of 11 with red counting #(380) on reverse of second stamp , Y&T #1331, 1331b, VF NH with horizontal crease in sixth stamp. Y&T cv€82.7 about \$91 PH \$85
245	☒	France B72, B81, B83 (3) Semi-Postals on cover to USA , all VF or slightly better, Paris to Detroit, 1939 contemporary usage cv (\$44) PH \$40
246	⊙	French Colonies 47, 50, 52 Remainder group of (4) of France's Peace and Commerce and Commerce Issues , F-VF used, with faults, #47 and #52 hinge thins, #50 sound. Also includes Benin #36 cv (\$31) \$16
247	★★	Gambia 175-87 ½p-£1 1963 Blrd Definitives , complete set of 13, F-VF to XF NH, with bright vibrant colors cv (\$65) PH \$65
248	☒	1844 Wool Market Report in Stampless Cover, Germany to U.S. , pr. Steamer via Liverpool &/Halifax" to "Mess. S. Slater Sons/Webster/Massachusetts" with blue "R.V. SWAINE/HAMBURG" in double oval at upper left. Postage was "22" and with "16" in magenta. Red "PAID/4 OC 14/1844" cds ccl from the Free and Hansentic City of Hamburg (independent city state/country) and red "BOSTON/SHIP/NOV/3/MS" cds receiving ccl. Most of the typed report quotes the "Leeds Mercury" English newspaper regarding the current and future wool market throughout Europe. Fascinating look into the past . PH \$40
249	☒	1929 Catapult Mail Cover , franked with Germany #374 horizontal pair and #377 horizontal pair. Each pair tied to cover with "DEUTSCH-AMERIKANISHE-SEEPOST/ BREMEN/15.8.29/NEW-YORK" dc bridge ccls. Also, with red boxed "Mit Katapultflug hs and red oval "Deutscher Katapultflug/D. "Bremen"/New-York/20 August 192." Backflap depicts a 5-story building with "Hotel Albert:" at top and "H.W.Eicke" at lower left and "Bremen" at lower right. Nice cover, Haberer "Katapultpost" cat. for the Bremen and Europa ships #3b PH \$70
250	☒	1930 Catapult Mail Cover , franked with (3) Germany #377 25pf von Hindenburg singles and each tied to cover with June 17, 1930 Hanover (Germany) dc bridge ccls. Cover with ms "U.S.A./Dampfer Bremen mit katapult/flug-post" directions at top, plus red boxed "Mit katapultflug hs at left and red "Deutscher Katapultflug/DAMPFER/"BREMEN"/ NEW-YORK/25.6.1930" hs in center. Haberer "Katapultpost" cat. for the Bremen and Europa ships #16a PH \$50
251	⊙	Germany 434-35 12pf & 25pf Lost Colonies of Germany Remembrance High Values , F-VF, postally used cv (\$21) \$16
252	☒	Germany 580-81 12pf and 75pf 1947 Leipzig Fair Issues FDC and Special Edition , first day card has 2.9.47 Fair cds with copy of original proclamation attached, 2nd card has 7.9.47 Fair cds for end of show. First day card has toning front and back with pnb, end of show card slight toning on reverse with pencil notes on front indicating Scott catalog no's. Very nice commemorative of Leipzig 450 years PH \$50
253	☒	Germany 683 70pf Deep Yellow on commercial air mail cover (Military usage to USA) , neatly hand-lettered address in ink, posted from Stuttgart to Milwaukee April 19, 1954, Michel catalog number 136 with value of €65 on cover. Opened neatly at top, generally very good condition with some of the airmail border faded and pencil notes on reverse that appear to be an engineering assignment for the writer PH \$75
254	☒	Germany 1108//1202 1975 Munich Exhibition and Anniversary Event Covers (4) , VF, all unaddressed; exhibition covers include 1 - "PRODUCTRONICA 75" (Information Systems for Electronics Manufacturing); 2 - "DEIN HEIM - DEINE WELT" (consumer exhibit); 3 - "SYSTEMS 75" (Computer Systems Seminars & exhibits) and the anniversary is the Centenary of the "BAVARIAN INSURANCE CHAMBER". All with event themed postmarks \$20
255	★/★★	Germany B209-214 3+7pf to 12+38pf 1942 European Post Congress , F-VF, B209-11 LH and B212-14 NH, very fresh with great colors cv (\$9) \$8
256	☒	Germany B251 12+38pf Centenary of Birth of Dr. Robert Koch on commercial cover , F-VF, tied to cvr w/dc bridge pmk, "BOHMISCHDORF (OSTSUDET)/ 01.2.44-18". Cover is a window envelope w/c/c "SUDET-ENLANDISCHE/EISEN-UND STAHLWERKE A.-G./ BOHMISCHDORF.OSTSUDETENLAND" Reverse has receiving pmk cds "VAASA/9.2.4413/VASA". Vaasa is in Finland and front has dc stamp "TARKASTETTU...indistinct/81". In Finnish "TARKASTETTU" means checked (censor stamp). Condition is very good, minor gum toning, opened neatly at T and minor tear in flap. Small tear in upper left corner of window area, and a few very minor creases. Nice war-time cover PH \$20
257	★★	Germany-Berlin 9N134 70pf Violet Schiller Theater , VF NH, key to set cv (\$21) PH \$21
258	⊙	German Democratic Republic 10N29//44 2pf to 84pf Portrait Definitives watermark 292 , F-VF Used. Included are nos. 10N31 and 10N41 NH and 10N44 LH cv (\$24) \$24
259	★★	German Democratic Republic 330c, 333a, 477b Complete 1961 Booklet with (3) panes and extra ad pages , VF NH, Michel catalog #361, staple was removed, (2) additional pages of advertising and restapled. Fresh booklet cv (\$15) \$15
260	⊙	Great Britain 43 4p Vermilion Pl. no. 9, Pos. AJ-JA , F-VF Used, crease corner perf upper right, repaired tear at left into middle of stamp cv (\$72) PH \$35
261	⊙	Great Britain 179 2sh 6p Gray Brn KGV Seahorses , VF-XF, with 28 FEB 33 date, several toned perfs at top, very sound cv (\$75) PH \$60
262	⊙	Great Britain 286-89 2sh6p-£1 KGVI , VF-XF, 10sh has crease top to bottom along ccl mark cv (\$31) \$20
263	☒	Great Britain 296 2½p Scarlet on QEII Coronation Cover , VF, unaddressed with "Uckfield/2 JNE/1953/ SUSSEX" cds, scuff on front \$10
264	⊙	Great Britain 309-12, 528 2sh6p-£1 QEII Castles Issues, lot of (6) ,all VF, (5) have wmk 308, other un-watermarked; second 310 has corner cease lower left cv (\$63) \$45

**AUCTION RESULTS AVAILABLE FRIDAY, MARCH 8, 2024.
RESULTS HOTLINE (281) 493-0566.**

265	☒	Great Britain 313 2½d Scarlet Coronation Issue on FDC , F-VF, typed address (petroleum topical) with cachet by ArtCraft, cvr opened at top with small tear resulting above cds ccl stating "LONDON.S.E.I/3JUN/1953/C" with "LONG/LIVE/THE QUEEN" with crown killer. Cover has overall "yellowing" and slight gum toning and still a good example of a Coronation FDC \$12	
266	★	Great Britain 317c/60ap ½p/4½p 1957 and 1959 Mixed Set (7) Graphite Line on Back QEII Definitives , VF LH, includes (4) non-phosphor and (3) phosphor; #317c and 318d, 356c, 357d, 358cp, 359ap and 360ap, colors and impressions very good cv (\$68) \$60	
267	☒	Great Britain 392 6p Paris Postal Conference Issue on FDC , F-VF, addr, no cachet, tied to cover with cds pmk "CLECK HEATON/645PM/7MAY/1963/YORKSHIRE". Cover in good condition, opened neatly at top pencil notes front and back and several tone marks front and back \$10	
268	☒	Great Britain 749-52 7p-12p Railroad Sesquicentennial Issue on (4) FDC's , VF, label address, cachet by British Post Office, all appropriate FDOI pmks; with stuffers. Excellent condition, tiny bumps on corners and (2) with small tone spots upper left corner. Great celebration of English Railways \$10	
269	★★	Great Britain 1447A £3 (1995 Issue) , VF-XF NH, very fresh and great colors cv (\$12) \$15	
270	⊙	Greece 54 10l Orange on Cream Paper and no figures on back , Fine Used, close at bottom, sound cv (\$9) \$8	
271	★	Greece 338-43 1.5d-5d 100th Anniversary of the Battle of Navarino , (Hellas #485-90) F-VF to VF-XF LH, #340 is variety #340a cv (\$112) PH \$110	
272	★	Greece N140 25d Deep Blue, Lower Right Corner Margin Single with partial impt "FRERES, CORFOU." and (2) Pre-Printing Paper Folds , VF LH, toning spot on one perf at right, both pre-printing paper wrinkles are diagonal: 1) from left edge through L "25" to front bottom of neck; 2) from left edge, left of delta, through front of hat to upper right corner of inner frame. Great conversation piece and unusual item for an exhibitor cv (\$75) PH \$80	
273	★★	Indonesia 798a 50r Souvenir Sheet of 1 , F-VF NH cv (\$40) \$40	
274	☒	Italy 417-18, C16 75c and 1.25l Rome-Berlin Axis Issues and (2) 1R Airpost on commercial censored cover , stamps F-VF with multiple dc bridge postmarks "CUORGNE/10-7-41. 1x12/AOSTA", with (2) censor examiner seals (Italian on right and U.S. on left) addressed to Butte, Montana (we suspect RARE usage). Cover is Airmail envelope roughly opened at left and couple small stains on back PH \$30	
275	★★	Italy-Trieste J16//J29 1l/500l 1949-54 Postage Due during Occupation (11 values) , F-VF NH, short set missing J18 (3l) and J26 (5l), includes scarce 500l, no faults noted, shortish perf on 6l lower right. Very decent centering on most cv (\$144) PH \$125	
276	⊙	Korea - Democratic People's Republic 70 w Dull Blue Green IGY Imperforate Issue , VF, CTO cv (\$30) \$30	
277	★	Libya 621 150d 1976 Montreal Olympic Games Souvenir Sheet of (1) , VF LH cv (\$16) \$16	
278	⊙	Monaco 6 25c Green , VF, with light Monte Carlo dc ccl, thin cv (\$75) PH \$45	
279	★★	New Zealand 1434b 40¢-\$1.80 Vineyards Issue, Complete Booklet with (7) Panes , VF NH cv (\$19) . . . PH \$19	
280	☒	New Zealand B28-29, 40-43 Lot of (3) Health Stamp FDC , stamps VF, address in ink, neat script, cacheted, neatly opened at top, with couple minor tears, plain stuffers and (1) with note of who sent \$15	
281	★	Portugal 662-669 10c-3.5e 1946 Castles Issues , F-VF to XF LH cv (\$119)ex PH \$70	
282	★★	Qatar 99-99L 1np-10ru 1966 Sheik Ahmed Coin Issues , XF NH, complete set of 12, only 30,000 sets issued. Extremely scarce! cv (\$172)ex PH \$170	
283	⊙	Romania 54//72 1872-79 Issues (4) , contains no's 54, 58-9 and 72 (perf 11½) F-VF with curious ccls; clean fresh group cv (\$101) PH \$100	
284	c⊙	Russia 265var 3k Red and Black (Lenin), Imperf, 1st Printing (Ty. I) 20.25 x 25.2mm , Michel #238B Ty. I, Soloviev #195, Zagorsky #27; VF and sound with (3) pencil expertization signatures on back PH \$100	
285	★	Saar B5-8 20+20c - 1.50+1.50fr 1927 Semi-Postal Issues , complete set of 4 F-VF to VF OG cv (\$53) \$45	
286	★	Saar B67-75 1949-50 Semi-Postal Issues (9) , VF to XF OG in (4) complete sets cv (\$76) \$75	
287	★	St. Lucia 13 (6p) Pale Lilac , VF OG, Stanley Gibbons #17a cv (\$125) PH \$125	
288	★★	Singapore 144-149 10c-\$1.00 1971 Paintings of Singapore , complete set of 6, F-VF to XF NH cv (\$54) \$50	
289	★	Somali Coast 7a 2c Claret and Black on thick paper , VF OG, clipped lower left corner, lightly hinged but minor DG cv (\$17) \$12	
290	★	Spain 49 2c Green on Green , VF OG ph, with paper adherence on back, full margin at left, almost at top, and close but clears at right and bottom, clipped corner upper right and small thin lower left corner cv (\$350) \$175	
291	★	Switzerland 95 30¢ Red Brown 1892 Standing Helvetia , F-VF OG, some glazed gum and has HR, small section of uneven perfs on left side cv (\$23) \$16	
292	⊙	Switzerland 160a Booklet Pane of 6; (5) 5c and (1)10c , F-VF, postally used cv (\$100) PH \$100	
293	★★	Thailand 780-783 75s-5b Shrimp and Lobster Export Issues , F-VF to XF NH cv (\$20) \$20	
294	☒	Transvaal 271 2½p Ultramarine and Black, Horizontal Pair on 4p KEVII Registered Postal Envelope , VF-XF with "FORDSBURG/JOHANNESBURG/8-JAN.06" dc ccls addressed to Westphalia, Germany. Same ccl on reverse with HOXTER (Germany) receiving ccl Jan. 28PH \$35	
295	★★	Trinidad & Tobago 89-102 1c-\$4.80 1960 Definitives , complete set of 14, F-VF to XF NH cv (\$53)ex PH \$53	
296	★★	Uganda 97-110 5c-20sh Birds , complete set of 14, F-VF to XF NH cv (\$58) PH \$55	

**15% COMMISSION ADDED TO ALL LOTS.
THANK YOU FOR BIDDING!**

297 **Vietnam 1955 Postal Card**, VF, postally used with postmark cds "YENSO VIETNAM/24-12-55/10492" posted to Siagon, early Inter-regional correspondence, scarce PH \$300

U.S. COLLECTIONS

298 **★** **1969 USPOD Commemorative Mint Stamp Year Set**, in original green, blue and red folder, containing #1365-1386 and C76. Excellent condition and quite scarce! Brookman cv \$180 PH \$150

299 **★** **1970 USPOD Commemorative Mint Stamp Year Set**, in original orange and blue folder, containing #1387-1392 and 1405-1422. Stamps and folio in excellent condition and this is the scarcest of all issued mint sets. Brookman cv \$300 PH \$275

300 **Group of 3 USPS Scrapbook/Souvenir Booklets for French Revolution Joint Issue, Sea Creatures Joint Issue with Russia and Baseball Legends Babe Ruth, Lou Gehrig, David Robinson, and Roberto Clemente.** In excellent/pristine condition, Baseball stamps are NH; Joint Issues are first day cancelledex PH \$36

301 **★** **UN - New York and Geneva 63//288 and C22-3 and 49//70 Lot of about (400) stamps**, as Inscription Blocks of 4/6/10, VF NH, (48) New York issues with over (300) stamps and (9) Geneva issues with over (80) stamps cv (\$123) \$60

302 **UN - New York 258//288, C22-23 Lot of (33) FDC's**, F-VF, all unaddressed and with official UN cachets, covers range from 1975 to 1977 \$40

303 **UN - Geneva 49-64, 67-70 Lot of (21) FDC's**, F-VF, all unaddressed and with official UN cachets. Covers late 1975 to late 1977 \$25

FOREIGN COUNTRY LOTS

304 **Australian States Accumulation of (46) issues from 1880-1900**, F-VF generally, postally Used, a few faults, includes no.'s 1, 2, 19 and 20 of the Commonwealth cv (\$86) PH \$60

305 - **Australia 398//525 Collection of about (150) on stock pages**, F-VF, mix of used and NH, most NH, used are 410//413 definitives, comprehensive collection for period, includes AAT no.'s L11, 19 and 20 and British Antarctic Territory no's 20-23 cv (\$225)ex PH \$170

306 - **1875-1892 Brazil and Peru Mint Postal Postal Cards and Envelope (13)**, Brazil 1880 50c blue pc and 80c yellow orange unsevered reply pc; 1881 20c brown pc and 20c black brown pc; 1890 40c deep orange on blue and orange island pictorial pc; 1892 red 100r postal envelope. Peru 3c red pc; 1875 2c blue on orange envelope, 5c green on envelope; 5c green on pale yellow envelope, 10c red on envelope and 20c purple on envelope. Each mounted with clear corner mounts on blank pages. Also, Peru 9"x7" envelope with 50c carmine rose embossed with coat of arms \$45

307 - **Brazil 1988-90, 2003-2015 lot in homemade album**, almost 250-300 stamps and many souvenir sheets, 95% mint NH, many topicals present cv (\$380) \$250

308 **Canada 42//C6 Remnant lot of (191) stamps in glassines**, (39) different, generally VF with some F-VF and some XF, all used, includes 211-16, 249-62, (88) 599A, (18) 601, (14) 411 and (10) each of 415 and 492. Useful lot for the packet maker cv (\$240)ex PH \$120

309 **★/★★** **Canada 202//893 Remnant singles and sets (40)**, F-VF, mix of NH (38) and LH (2-no. 202 and 223) cv (\$44) PH \$32

310 **Canada TC1 Thematic Collection 1967 Centennial Stamp Case**, VF, 1¢ to \$1 1967 Centennial Issues stuck to Canada post display card. Unitrade catalog numberPH \$12

311 **Canada O1//O269 Collection of Officials (about 50) Perfins and Overprints**, F-VF, mostly postally Used (O27 is unused and in a mount, but seems top perfs are stuck). Perfins are 4-hole variety. Stamps hinged to homemade album pages cv (\$133)ex PH \$90

312 **Canada FDC Collection in (3) blue albums**, contains (280) different FDC's 1939-1990; (38) pre-1973 with address, rest unaddressed. Most with cachets with about 20-30 1960's issues uncancelled. Very nice collection with lots of nice topicals \$250

313 **★** **Republic of China and Taiwan 1012//2913 Collection of about (500) stamps from 1946-1993 for "CHINA-FORMOSA" on Minkus pages**, F-VF, mix of used and unused, all hinged to album pages. Pages are in a Minkus "CHINA" single country binder (2 post). Best representation of stamps is mid-1960s to mid-1970s. Highlights are nos. 1862a souvenir sheet (\$75) and the 1971-72 "DOG SERIES 1 and 11" (\$75.00). Pages are dated to 1997. Nice, clean, well organized collection to either grow or add to existing material cv (\$425) . .ex PH \$250

314 - **China, Peoples Republic of 1890//2131, (PRC) Collection of (48) First Day Presentation Folders**, VF, 1983-1987 issues (missing most souvenir sheets) in bi-fold folders. Published by Beijing Stamp Company (35) and China National Philatelic Corporation (13). All in excellent conditionex PH \$120

315 - **Germany - Offices in Morocco 1//55 Selection of (29) Issues**, F-VF, mix of Used (12) and OG (17), still fresh with nice colors, in mounts on pages in page protector, includes 1-2, 4, 7-16, 20-23, 32A and 45-55 cv (\$177)ex PH \$150

316 - **Germany - Offices in Turkish Empire 3//57 Selection of (25) Issues**, F-VF, mix of Used (19) and OG (6), includes 3, 8, 12-21, 33-6, 38-9, 43-4, 52 Used (\$45) and 54 Used (\$75) cv (\$351)ex PH \$300

317 - **Great Britain 1859//1901 1999-2000 Millenium Series Royal Mail Post Cards (39)**, mint cards with stamp replicas as the picture and include the 1999 categories of Entertainment, Citizen's Rights, Scientists, Farmers, Soldiers, Christians and Artists; for 2000 includes Above & Beyond, Fire and Light and Water & Coast; total of 39/40, missing 1870ex PH \$65

318 **Iceland, Norway and Sweden 1956 Northern Countries on FDC's (4)**, first "NORDEN" issue, short set 3 of 5 countries (missing Denmark and Finland), all addressed (pencil, ink and typed); Iceland has cachet by "KAAD", Norway appears to be an "Official" cachet and Sweden with no cachet. The NORDEN and EUROPA issues have an interesting history, well worth studyingPH \$75

**AUCTION RESULTS AVAILABLE FRIDAY, MARCH 8, 2024.
RESULTS HOTLINE (281) 493-0566.**

- 319 ☒ **Indonesia 421//1955 Cover Lot of (28)**, most are 1996-2001 era, with only (2) earlier; contains (23) FDC's, (2) stamp exhibition official covers and (3) other special event covers. Many topics including animals, costumes/culture, flowers, sports and much more! Also including #1851 special FDC with a large 1 3/8" diameter piece of silicified coral attached to FDC as part of the cachetex PH \$75
- 320 ☒ **Israel FDC Collection**, contains (122), all unaddressed, about 8-10 special event covers, the rest are FDC's, 1949-2005 issues, definitives, commems, (3) machine vended and (1) postal envelope (30m flag like 5c. #15 and Bale #16); most with tabs \$75
- 321 - **Israel Mint Postal Stationery Lot (49)**, contains air lettersheets, internal lettersheets, postal cards, and reply postal cards, (43) different and (6) duplicates including Bale # ils2//7, AS.1//28, envelope, PC.1-2, PC.6//20, PC/27A-D and RPC.1-2. Nice group cv (\$150) \$125
- 322 ☉ **Italy & Area 36//1148, EY13 Accumulation of about (60) stamps in stock sheet**, mix of used, LH and mint; generally F-VF (no. 36 pulled perf and 37 faulty), Italian stamps incl 36-38, 45, 46 (2), 47 (5), 48 (3), 50 (with natural SE at top), 52-4, 56 (2), 67 (3), 68-70, 77-80 (9), 663-4 (NH) & 1974 issues (1138//48+). Also includes Fiume 172-80 LH (\$25) and Italian Colonies C8-12 VLH (\$34). Interesting group cv (\$280)ex PH \$150
- 323 - **Japan 92//525, B3 Accumulation of (82) Classics mounted on Quadrille album pages**, F-VF, mix of postally used and OG - all hinged to pages, ranging from 1899 to 1951. Some better items include nos. 452, 525 (unused) and no. 110 (used) cv (\$337)ex PH \$200
- 324 - **Japan 758//903, B32-3 Lot of (12) First Day Souvenir Panels, with engraved metal cachets**, 4 3/4 x 7 bi-fold panel with imprint on front "POSTAL STAMP DESIGN/METAL ENGRAVING" along with Japanese characters. Left inside panel has stamp and engraving data in Japanese and English. Right inside panel has stamp with pictorial FDOI cancel plus a colored metal engraving reproducing the stamp (a la maxi-cards). Folder has been folded inside out for display purposesex PH \$240
- 325 - **JAPAN COLLECTION OF COMPLETE PANES OF 50/20/10 AND FDC'S**, stamps F-VF NH, includes (6) panes of 50, 68 panes of 20 and five panes of 10, made up of (64) different issues. Includes no.'s 881//1169, B36-7, and B41. Usually with (2) copies of the pane and (3) FDC's; SCV for stamps is \$950. Market value for FDC's is estimated at \$150. All housed in 7 1/2" x 10 1/2" sheet albums. Covers are unaddressed and in excellent to pristine condition. Nice group! Sheets of (5) foldedex PH \$750
- 326 ** **Mexico 875//G21 Accumulation of about (80) on stock page**, VF NH (G17 is stuck to page), includes over (35) postage, about (33) airmail, (3) special delivery and (5) insured letters; noted (2) with tone spots cv (\$112) . PH \$100
- 327 - **Netherlands 1986-1988 Issues in Homemade Album**, contains definitives, commemoratives, Souvenir Sheets, Booklets, and Semi-postals in singles, blocks, and pairs and most of the sets include a single and/or a pair as well as blocks of 4 in mint and used conditions, ranging from #622 up to #728 and #8619-B640a. Also including (7) mint postal cards and (1) postal envelope of the Queen Beatrix definitive type of the era. Mint Souvenir Sheets and booklets are mint NH. Mint blocks usually hinged on one stamp. Others generally hinged, except many singles, blocks, and pairs issued in special post office presentation packs cv (\$565)ex PH \$350
- 328 * **Salvador Collection of (24) Cut Squares from 1890-92**, VF-XF LH, most are very sound; 1¢ and 2¢ 1891 have adhesions on front, couple with minor clipped corners and 1¢ 1892 Green has hinge thin and creased lower left and lower right corners PH \$30
- 329 ☒ **South African Collection of Stationery (35)**, VF, from Republic of South Africa (9), Southwest Africa (25) and Bophuthatswana (1), includes RSA FDC (no. 610-13) and (8) maxi-cards; (2) SWA FDC (#443-46, 467-70) and (14) mint postal cards and (8) used; (1) FDC of Bophuthatswana #25-8; and (1) mint RSA/SWA Official envelope; interesting group needing a lookex PH \$45
- 330 - **Spain 815//2158 Accumulation of about (40) all different**, VF, mostly NH, about (6) unused, NG. Mostly commemorative with couple complete sets (1353-62 and 1671-74) cv (\$10) \$10
- 331 ☒ **Thailand 543//2517 FDC Lot of 14**, all unaddressed with official cachets, contains #543-46, 1271, 2506-7, 2508-9 and 2517a-j on individual FDC's. Beautiful group \$30
- 332 ** **Viet Nam, Democratic Republic 798//984 1976-1979 Issues in complete sets in small stockbook**, except 859, contains 798-805, 816-18, 848-53, 864-71, 876-83, 896-900, 909-12, 926-33, 955-60 and 983-4, plus 856-8 and 860-63. Many topicals include sports, space, insects, birds, etc. cv (\$57) \$50
- 333 ** **Vietnam 2515, 2609, 2743, 2801, 2816 Bulk Lot of (135) in panes and part panes**, F-VF NH; includes no's 2515 (20), 2609 (45), 2743 (20), 2801 (20) and 2816 (20), fresh lot though margins have faults with staple holes and tears. Nice lot for the packet maker cv (\$80) \$50

WORLD WIDE COLLECTIONS

- 334 - **Africa Independent Collection in Minkus album**, (25) countries, mixed mint and used, over (1,100) stamps, most of the value in Egypt and Ethiopia. Lots of topicals of all kinds \$300
- 335 - **BRITISH ASIA COLLECTION IN STANLEY ALBUM WITH SLIPCASE ON QUADRILLE PAGES**, contains 900-950 mint and used stamps, most of the value from Bahrain and Ceylon, but also some from Aden and South Arabia. Some better items including Aden #16-27 mint hinged; Bahrain 12-13 Used, 20-30 mint hinged; 35-37 mint hinged, 38-51 (1-7 each) mint hinged, 78-80 mint hinged, etc.; and Ceylon #289 mint hinged, 289-289A Used, 307-12 blocks of 4 mint hinged, 319-328 blocks of 4 (320 only single) mint hinged, etc. Also, some high values with revenue ccls present but not included in cv are Ceylon #211-216. Stamps present from 1880's-1968 cv (\$3300) \$2000
- 336 - **BRITISH ASIA COLLECTION IN MINKUS QUADRILLE PAGE ALBUM**, contains over 2,300 mint and used stamps from Brunei, Hong Kong, India, Kuwait, Labuan, Malaya States, Malaysia, Muscat and Oman, Pakistan, Palestine, Qatar, N. Borneo, Sarawak, Singapore and Trucial States, all hinged. Lots of commons and a few covers and ppc's, but plenty of better sets, parts sets and singles throughout. Also, including Hong Kong #154//164A mint hinged; Kuwait 11-12, 17//32, 59-69, C1//4, O2//10, O15//23 mint hinged; Oman #1-18, 20-24, O1-8; and much more with many perf varieties. ecv \$2,000 \$1200

- 337 - **British Oceania to 1981 in Minkus album**, contains over (230) stamps and (2) Souvenir Sheets, most mint hinged, less than 10% used. Stamps from Fiji, Gilbert and Ellice Isl., Gilbert Isl., Nauru, New Hebrides, Pitcairn Isl., Samoa, Salomon Isl., Tonga and Tuvalu, including used Tonga #48-49. Clean and nice collection cv (\$158) \$120
- 338 - **British Colonies Packet (145)**, F-VF, mostly Used with a few NH/LH, Honor-Bilt packet no. 924, generally common material with best item Pakistan O44-6 (\$14.25). Stamps from about (35) countries from Australia to Turks & Caicos, most have one or two issues with Australia about (20), India (51) and Pakistan about (20). Interesting mix cv (\$82)ex PH \$65
- 339 - **French Colonial Empire Collections of ab (90) Countries**, generally F-VF, mixed Used and Unused (almost all ph) with a few flts, mostly hinge thins. Includes Dahomey no.'s 42//81 (18), French Guinea 18//89 (17), French Morocco 11/C1 (26), French West Africa 36//J3 (17), Chad 19//51 (11) and French Congo no. 18, Mostly common issues with a few (1/2 dozen) in the \$3-\$5 range, and could fill in empty spaces in your albums cv (\$79) \$65
- 340 - **GERMAN, GERMAN STATES, GERMAN COLONIES AND EAST GERMANY COLLECTION IN MINKUS ALBUM**, contains (2,600) mint and used 1872-1974 issues, including better items such as Germany MH #665-6, 693-5, 698-701, B338-41, C20-25, C34, etc; Germany used #337-9, 350-62, 366-84, 665-6, 669-73, 675-85, B5-7, B325-30, B332-41, C3-7, C27-33, C46-55, C56 (3), etc.; Saar MH #54-7 and much more. Very clean, well chosen collection. ECV about \$5,500 \$2000
- 341 - **World Wide Collection of over (300) stamps and (40) Souvenir Sheets and Mint Sheets from four countries of CIS (Commonwealth of Independent States)**, F-VF, mixed used and NH, mostly NH. Includes Tadjikistan (5/2), Turkmeniston (7/1), Ukraine (20/21) and Uzbekistan (136/20). All in mounts or page protectors on Scott Country specific Speciality album pages and in a standard 3-ring binder (NB: notation (##) indicates stamps/sheets) cv (\$580)ex PH \$350
- 342 - **World Wide Selection of about (170) on circa 1960 Approval Sheets**, F-VF, postally Used and some CTO, (37) countries represented from Australia to Uruguay with most having 1/2/3 stamps but with larger holdings in some countries, e.g., Mexico (30), Portugal (25), Canada (30), Russia (6). Most stamps are common issues with the best being Great Britain nos. 310 (\$9) and 311 (\$37.50); Mexico no. 204 (\$12) and Russia no. 8 (\$13.50). An interesting mix that would be useful in filling some album spaces cv (\$118)ex PH \$80
- 343 - **World Wide Collection in large 48 page Lighthouse stockbook with padded leatherette cover**, contains sets, no high values noted, but a very wide variety of countries. Stockbook with blank pages, clear pockets and interleaving, brown #LKZS 4/24 and nice \$100
- 344 - **World Wide Accumulation of over (1,000) stamps in glassines in a cigar box (no.1 and no. 4 glassines)**, collectors duplicates, mostly singles, but some duplication and about 1/2 dozen heavily duped). Includes abojut (40) countries from Argentina to Yemen. Most heavily represented issues are from Hungary (130), Germany (70), Italy (68, but heavily duplicated), Canada (59) and Australia (570). Glassines are not catalogued nor in any order. Estimated catalog value is about \$322. Most are common definitives and some commemoratives. F-VF, mostly used cv (\$323) \$50
- 345 - **World Wide Souvenir Sheet Collection Remnants (24)**, F-VF, mix of NH and CTO, mostly NH; includes Czech #2316, Lesotho #296, 301 (2) and 318, UN #145, Liberia 2000 U.S. President Series of 2000, Poland #829 (faulty) and Germany/Berlin. Polish Souvenir Sheet is stained and has DG with thin (filler type). Quite a varied lot with sports, Christmas, Presidents topical material cv (\$84)ex PH \$50
- 346 - **World Wide Remnant Lot of Souvenir Sheets, Mint Sheets, Panes and Large Multiples**, F-VF NH, includes U.S. no. 1686-7 cancelled; Belgium 736a and B800; PRC no. 3459; Indonesia 2 of 4 Souvenir Sheets issued for no. 507-16; Japan 714 Block of 20, 773, 805 and 858 Pane of 20; Korea no. 2184 with label and postcard; San Marino no. 539a; and Turkey no. 1601. Nice assortment cv (\$85)ex PH \$85
- 347 - **World Wide Collection of Cut Squares from Envelopes, Post Cards and Wrappers (about 70)**, postally Used, some cut to shape from approximately (25) countries and one or two from each with Great Britain and France having (10) each. Mostly date from late 1800s to about mid 1970s \$20

TOPICAL & MISC. LOTS

- 348 - **NASA Local Post Collection of (54) different mint sheets**, each sheet contains 9, 10, or 12 stamps, all mint NH. Contains Gemini issues #G-1 to G-16 and G-18 to G-21; Mercury issues #M11 and M9-13; Apollo issues complete #A1-A20; Skylab issues complete #SL1-SL6; and Apollo-Soyuz issue complete #AStP1-AStP2. Very close to a complete collection depicting spacecraft, emblems and astronauts. All perforatedex PH \$175
- 349 - **Religion Topical Collection on White Ace Religion blank pages**, mostly mint NH and LH with small amount used from many different countries. Mostly complete sets and or souvenir sheets, including a few better items, such as: Belgium #B138 VF LH (\$50); France #1151 imperf (\$67) and #1653-6 imperf (\$30) all VF NH; Jordan #531N XF NH (\$30); Panama #C300-321a VF NH (\$65); Virgin Isl. #646-50 VF NH (\$17); and much more! Represented seem to be Christianity, Jewish, Muslim and Buddhist religions cv (\$400) \$350
- 350 - **World Wide Collection of Commonwealth Common Design FDC's (8) for Shakespeare's 400th Birth Anniversary**, VF, (7) Addressed and (1) unaddressed, all with cachets, most (6) with portrait of Shakespeare and (2) others each different. All with cds pmk dated 23 AP 64. This is a short set, 8 of 12, for this common design issueex PH \$40

AUTOGRAPHS

- 351 - **(Racing) Mario Andretti (1940-)**, 1969 Indianapolis 500 winner, one of the most successful drivers in the history of motorsports, with Scott #1479 FDOI ccl PH \$40

**15% COMMISSION ADDED TO ALL LOTS.
THANK YOU FOR BIDDING!**

- 352 **1846 Stampless Cover from (later) Gov. of PA**, blue folded letter signed "Bigler/Senate" at upper right with blue "HARRISBURG/Pa./APR/14" cds ccl and blue "PAID/5" hs in hexagonal box addressed to Josiah W. Smith Esq/Clearfield/Pa.". Letter dated Apr. 12, 1946 from (and signed by) William Bigler (1814-1880), who was at that time a State Senator (1841-47), was Governor 1852-55, U.S. Senator 1856-61 and Pres. of the Philadelphia and Erie Railroad (1855-?). This letter discusses a proposed bond and that Josiah (as the Senate's attorney) ask Mr. Wallace "to give a judgment in our favor for an amount sufficient to secure us, which you, will, therefore, have the kindness to do." A sinister line includes that "If he should refuse to do anything we then desire to adopt the most summary manner of forcing him to comply." Time to play political hardball, eh? Interesting letter signed twice by Bigler PH \$100
- 353 **(Football) Rocky Bleier (1946-), Pittsburg Steelers**, Running back for the Pittsburgh Steelers. Bleier has an inspiring back story. Drafted into the Army after his first season, Bleier was injured in Viet Nam, later being awarded the Bronze Star and a Purple Heart. Bleier returned to the Steelers and worked through the pain to regain his strength and become an important part of the team, with Scott #1728 FDOI ccl PH \$40
- 354 **(Football) Dick Butkus (1942-2023), Chicago Bears**, 1979 Pro Football Hall of Fame inductee. Butkus played his entire professional career for the Chicago Bears, with Scott #1788 FDOI ccl PH \$70
- 355 **(Baseball) Ken Caminiti (1963-2004), Houston Astros**, third baseman, also played for the San Diego Padres, Texas Rangers, and Atlanta Braves. Three time Golden Glove winner and 1996 National League MVP. 20¢ Babe Ruth stamp (Scott #2046) and cachet. Includes a Polaroid of Caminiti signing the cover PH \$40
- 356 **(Politics) John H. Clifford (1809-76)**, Governor of MA, ALS dated 1852 recommending John Hughes for a position, three pages, sensible repair \$100
- 357 **(Artist) Charles West Cope (1811-1890)**, popular British artist and etcher, painted several frescoes in the House of Lords in London and hundreds of beautiful, known paintings. 1880 2-page letter reads; "Dear Sir, In reply to your inquiry, I cannot say positively, as I am absent from home and have no notes with me, but I believe the picture you mention of a mother and child, was exhibited in 1834 or 5 (when I returned from Italy) in the British Institution and was purchased by Mr. Beckford of Fonthill. Faithfully years, CWCope". The painting in question is listed as #9 in pg. 375 in the book "Reminiscences of Charles West Cope, R.A." PH \$150
- 358 **(Football) Tony Dorsett (1954-), Dallas Cowboys**, Super Bowl and Heisman Trophy winner, 1994 Pro Football Hall of Fame inductee, with Scott #1560 FDOI cclPH \$125
- 359 **(President) DWIGHT D. EISENHOWER (1890-1969)**, signature on letter dated June 28, 1960 to Mr. A. Langley Coffey, verifying that Coffey's report (as a member of the Emergency Board investigating the dispute between the Pennsylvania Railroad Co. & some of it's employees, per Executive Order no. 10877) had been received. Pres. Eisenhower also expressed his "appreciation of your services and consideration of an extremely difficult problem." The letter, on "THE WHITE HOUSE" letterhead, is lightly tnd, mounted in an old wooden frame with green matting PH \$750
- 360 **(Tennis) Chris Evert (1954-)**, 18-time major singles title champion including two Australian Opens, seven French Open, three Wimbledon, and six U.S. Opens, 1995 International Tennis Hall of Fame inductee, with Scott #1507 and #1508 FDOI ccl PH \$25
- 361 **(Racing) A.J. Foyt (1935-)**, first four-time winner of the Indianapolis 500. Also, won Daytona 500, the 24 Hours of Le Mans and Daytona (twice), Pocono 500 (four times), and a long list of other races, with Scott #1479 FDOI ccl PH \$25
- 362 **(Football) Frank Gifford (1930-2015), New York Giants**, 1970 Pro Football Hall of Fame inductee. Gifford spent his entire career with the New York Giants. Football card included, with Scott #1788 FDOI ccl PH \$35
- 363 **(Tennis) Pancho Gonzales (1920-1995)**, given name "Richard" was an American tennis player who won 15 major singles titles, 1968 International Tennis Hall of Fame inductee, with Scott #1532 FDOI ccl PH \$35
- 364 **(Entertainment) CARY GRANT (1904-86)**, actor, SP 8" x 10" sepia portrait, star of a multitude of well known movies throughout his (34) year career and nominated for (2) Academy Awards, received the Lifetime Achievement Oscar in 1970, tiny spot at right, pinholes in corners \$750
- 365 **(Football) Joe Greene (1946-), Pittsburg Steelers**, defensive lineman, better known as "Mean Joe Greene", he is also the star of the famous 1979 Coca-Cola commercial, still beloved by many. 1987 Pro Football Hall of Fame inductee, winner of six Super Bowls, four as a player and two as an assistant coach PH \$75
- 366 **(Football) Bob Griese (1945-), Miami Dolphins**, quarterback, 1990 Pro Football Hall of Fame inductee. Two-time Super Bowl winner, including the Dolphins perfect season, with Scott #1787 FDOI ccl PH \$50
- 367 **(Entertainment) Alan Ladd (1913-1964)**, actor, B&W 8x10 SP, light blue signature. Popular actor of 1930's-60's with over (80) movies to his credit, including the starring role in "Shane" PH \$180
- 368 **(Football) Tom Landry (1924-2000), Dallas Cowboys**, a legendary Dallas Cowboys coach. 1990 Pro Football Hall of Fame inductee. Two-time Super Bowl winner, with Scott #1722 FDOI ccl PH \$125
- 369 **(Football) Don Meredith (1938-2010), Dallas Cowboys**, quarterback and Monday night Football commentator. Meredith is supposedly the inspiration for the quarterback character in "North Dallas Forty", written by teammate Peter Gent, with Scott #1546 FDOI ccl PH \$40
- 370 **(Football) Donnie Shell (1952-), Pittsburg Steelers**, Class of 2020 Pro Football Hall of Fame inductee, with Scott #1728 FDOI ccl PH \$45
- 371 **(Football) Don Shula (1938-2020), Miami Dolphins coach**. The 1972 Dolphins are the only team in NFL history to have a perfect 17-0 record. 1997 Pro Football Hall of Fame inductee, with Scott #1572-75 FDOI and ccl PH \$75
- 372 **(Football) Roger Staubach (1942-), Dallas Cowboys**, quarterback two-time Super Bowl winner. Won the Heisman Trophy while at the Naval Academy, then served four years of mandatory service including time in Viet Nam, before he joined the Cowboys. 1985 Pro Football Hall of Fame inductee, with Scott #1793 FDOI ccl . PH \$125

CHECK OPENINGS: StampAuctionNetwork.com or SHPAuctions.com

- 373 (Football) Lynn Swann (1952-), Pittsburg Steelers, a 2001 Pro Football Hall of Fame inductee, with Scott #1559 pair FDOI ccl PH \$100
- 374 (Actress) Ann Todd (1909-1993), British actress, stage and producer, costarred with Gregory Peck in Alfred Hitchcock's "The Paradine Case". B&W 3" x 5" photo signed in blue. Clean and nice! cv (\$115) PH \$115
- 375 (President) Harry S. Truman (1884-1972), signature on letter appointing Mr. Langley Coffey, to an Emergency board to investigate the dispute between Public Belt Railroad Commission and the Brotherhood of Locomotive Fremen, Engineman and Trainmen. The letter is white White House letterhead, dated Sept. 10, 1948. Somewhat toned, with three paragraphs, in an old wooden frame with green matte. PH \$600
- 376 (Football) Johnny Unitas (1933-2002), Baltimore Colts, quarterback, one of the most successful to ever play the game! 1979 Pro Football Hall of Fame inductee, with Scott #1546 FDOI ccl PH \$100
- 377 (Music) Paul Weston (1912-1996), "Father of Mood Music", pianist, composer and conductor. He was part of Tommy Dorsey's Orchestra, Music Director of Capital Records and won a Grammy Award w/his wife for Best Comedy Album in 1960. 8x10 sepia SPI in blue, small corner mount crease in lower left and upper right corners, otherwise nice cv (\$200) PH \$150
- 378 (Football) Danny White (1952-), Dallas Cowboys, quarterback, underappreciated as a Cowboy, coming in the shadow of Roger Staubach, White had success as an Arena Football coach, with Scott #1728 FDOI ccl \$150

DUCK SOUVENIR CARDS

- 379 - Card 17var (RW55) 1988 Issue, Bureau of Engraving and Printing Souvenir Card, Gold no. 005, Dual 7.1.88 ccls from Wash, DC and Eden Prairie, Minn., RW55, RARE! cv (\$595) PH \$500
- 380 - Card 24var (RW56) 1989 Issue Bureau of Engraving and Printing Souvenir Card, Gold no. 124, dual ccls Wash, DC and Lincoln, Neb, RW56 cv (\$195) PH \$200
- 381 - Card 43var (RW58) 1991 Issue Bureau of Engraving and Printing Souvenir Card, gold no. 072, 7.1.91 East Dorset, VT ccl, RW58 cv (\$195) \$200

DUCK COLLATERAL

- 382 - SOUVENIR CARD NO. 0001 FROM 1989 COLLECTORS CLUB OF CHICAGO EXHIBITION, awarded to Bob Dumaine for his exhibit of "Duck Stamp Rarities", signed on reverse and has pencil sketch by Bob, accompanied by the booklet of the rarities exhibit. Participants were a very select group of only the top, well known dealers. Unique item PH \$2750







OLD LICENSES, ETC.

- 383 L RW3//8 1936-1941 Issues (5) on Texas licenses, RW3, 4, 6 unsigned; RW5 and RW8 signed licenses in good condition, nice early Texas lot! F-VF cv (\$340) \$300
- 384 L RW7 1940 Oregon license with signed RW7, Fine, (3) balanced margins and close at left. Signed by G.A. Krause, Oct. 15, 1940, license complete with both Deer Tags, couple of folds not affecting stamp \$50




MISC. DUCK RELATED ITEMS

- 385 - RW1 1934 Mallards Replica Belt Buckle, 24k gold and sterling silver plate, first edition #751, made exclusively for American Buckle Co. in Bellaire, Texas. Non-exclusive license of the U.S. Department of the Interior, weighs 5 oz PH \$250
- 386 - RW59 1992 Federal Duck Stamp signing ceremony, held May 5, 1992 at the Bureau of Engraving and Printing in Washington, D.C. These programs were issued when the BEP handled the printing of the Federal Duck stamp. The artists and a long list of dignitaries were invited to the BEP to witness the printing of the new stamp. Page 83 of "The Duck Stamp Story" includes photographs from a similar even held for RW63. PH \$15

FEDERAL DUCK FDC's

- 387  RW48 1981 Ruddy Duck on FDC, F-VF, unaddressed, attractive Gill Craft cachet #RW48-4, RARE! cv (\$275)PH \$275
- 388  RW49 1982 Canvasbacks on FDC, VF, unaddressed, Fleetwood cachet, Mellone no. RW49-4 (Art by Balke) price notation on back, otherwise pristine condition cv (\$50) PH \$50
- 389  RW52 1985 Cinnamon Teal on FDC, VF, unaddressed, Gill Craft cachet on 5" x 7" card with cds "WASHINGTON, DC/JUL/ 1/1985" FDOI ccl PH \$45
- 390  RW55 1988 Snow Goose on FDC, F-VF, unaddressed, Gill Craft cachet, pristine condition cv (\$60) PH \$60
- 391  RW56 1989 Lesser Scaup on FDC, VF, unaddressed, with cachet by Daniel Smith (artist for RW55) signed and numbered (177/250) and signed by RW56 artist Neal Anderson PH \$50
- 392  RW58 1991 King Eider on FDC, F-VF, unaddressed Fleetwood cachet (Don Balke artwork), pristine condition PH \$40

STATE DUCK FDC's

- 393  AL12 Alabama 1990 Wood Ducks on FDC, VF, unaddressed premium hand-painted Milford cachet (Fred Collins), signed (Milford and KM), numbered 57/335, pristine condition, with stuffer PH \$75
- 394  CT1 Connecticut 1993 Black Duck (First of State) on FDC, F-VF, unaddressed, cachet by Thomas Hirata, stamp's artist and sba, numbered 215/2500, pristine condition PH \$75
- 395  DE12 Delaware 1991 Hooded Mergansers on FDC, VF, unaddressed, hand-painted Milford (Fred Collins) cachet, signed Milford & KM, pristine condition, stuffer included PH \$75
- 396  FL13 Florida 1991 Northern Pintails on FDC, VF, unaddressed, split hand-painted Milford (Fred Collins) cachet, signed Milford & KM, numbered 275/357 .. PH \$75
- 397  OH9 Ohio 1990 Black Ducks on FDC, VF, unaddressed, Milford hand-painted multi-colored cachet, signed (Milford & KM), (291) covers produced, pristine condition, with stuffer and appropriate FDOI cancel PH \$75

FEDERAL DUCK COLLECTIONS

398 (★) **RW1-40 1934-1974 FEDERAL DUCK ISSUES, FIRST 40 YEARS**, many with gum, most NG, all with sharp colors (cv as NG), Fine-Avg to VF, a few with faults, but most sound cv (\$1563) PH \$1200

399 ○/(★) **RW4/78 1937-2011 Federal Duck Issues (30)**, used, all signed, all with flaws, heavy signatures, dirty (need soaking), etc. Great lot for framing cv (\$497) \$125

400 ★★ **RW9-52 1942-1985 FEDERAL DUCK STAMP ISSUES (42)**, mostly VF, all NH, fresh no flts, great to build around! cv (\$2944) PH \$2500

401 ○ **RW13-37 1946-1970 Issues (25)**, F-VF to VF+ Used, light cancels with "top-notch" colors. Great group to build around for completion! cv (\$284) PH \$350

402 (★) **RW41-75 1974-2009 Issues, 35 years**, F-VF to XF, all unsigned, many with gum (cv as NG) cv (\$428) . . . PH \$350

403 ★★ **RW50-74 1983-2007 Issues (24)**, all F-VF and VF NH, no faults, fresh group. Face value \$315 cv (\$617) \$550

FEDERAL JUNIOR DUCK STAMPS

404 ★★ **JDS10 2002 Junior Duck Stamp, Lower Left Plate Block of 4 no. 000611**, VF-XF NH cv (\$210) PH \$210

405 ★★ **JDS13 2005 Junior Duck Stamp**, VF-XF NH cv (\$18) . . \$20

406 ★★ **JDS15 2007 Junior Duck Stamp Pair, with right stamp printing flaw**, VF NH, bright green spot at and below "M" of "STAMP" cv (\$125) \$125

JUNIOR DUCKS ARTIST SIGNED

407 - **JDS3(s) 1995 Junior Duck Stamp, Pintail**, sba J. Huang in gold, VF NH cv (\$275) PH \$285

FEDERAL DUCK STAMPS

RW1-20 were wet printed and due to the jumbo size of the stamps, natural gumbends are to be expected. They are not at all considered a fault. Likewise, some moderate gum skips are to be expected due to the gumming process. RW21 to date were dry printed and should be free of gum bends, skips, etc.

408 ★ **RW1 1934 Mallards**, VF VLH, LH once only on the side, with three equal margins, nice top, vivid color! cv (\$350) PH \$350

409 ★ **RW1 1934 Mallards**, F-VF LH, BIG stamp! cv (\$300) PH \$250

410 (★) **RW1 1934 Mallards (3)**, F-VF to VF NG, uncanceled, all with SE, all with sharp impressions and colors! (great for framing) cv (\$525) PH \$400

411 ★★ **RW2 1935 Canvasback**, slightly toned, but rich color and great centering, VF NH cv (\$700) PH \$675

412 ★ **RW2 1935 Canvasback**, rarest of all Federal duck stamps, F-VF OG cv (\$375) PH \$325

413 ○ **RW3 1936 Canada Geese**, discreet signature, VF, full OG hinged (good for a used stamp) cv (\$90) PH \$100

414 ○ **RW3 1936 Canada Geese**, almost invisible signature by hunter, pulled perf at bottom, VF cv (\$100) PH \$85

415 ○ **RW4 1937 Greater Scaup**, F-VF, Used and signed (vestiges on back), but removed, good looking stamp cv (\$65) PH \$60

416 ○ **RW4 1937 Greater Scaup**, neat, tiny signature lower left, F-VF Used cv (\$65) \$40

417 ○ **RW6 1939 Green-winged Teal**, four hunter signed stamps by hunters, each with a straight edge, generally F-VF cv (\$180) PH \$160

418 (★) **RW7 1940 Black Ducks**, VF NG, corner crease upper right and full length crease pressed out at bottom, natural straight edge at bottom cv (\$60) \$30

419 ★ **RW8 1941 Ruddy Ducks**, VF LH, couple teeny gum skips cv (\$95) PH \$95

420 ★★ **RW10 1943 Wood Ducks**, VF-XF NH, P.O. fresh, beauty! cv (\$120) PH \$140

421 ★ **RW10 1943 Wood Duck**, F-VF, NH but has small adhesion on gum cv (\$120) \$50

422 (★) **RW10 1943 Wood Duck**, Fine NG, thin by the denomination cv (\$35) \$12

423 ★★ **RW11 1944 White-fronted Geese, Bottom PNS no. 155590**, F-VF NH, couple tiny npi on face and straight edge at left cv (\$125) PH \$110

424 ★★ **RW12 1945 Shoveler**, slightly yellowed at right top and several tiny natural paper inclusions, F-VF NH cv (\$100) PH \$75

425 ★★ **RW15 1948 Bufflehead**, VF-XF NH cv (\$60) PH \$65

426 ★★ **RW20 1953 Blue-winged Teal**, deep color, top selvage attached, Fine NH cv (\$90) PH \$75

427 ○ **RW23 1956 American Merganser**, F-VF, signed by hunter, with Upper Right Grizzly Island, CA hand-stamp cv (\$10) PH \$25

428 ★ **RW23 1956 American Merganser**, F-VF LH cv (\$85) . . \$35

429 ★★ **RW24 1957 American Eider**, XF NH, choice, JUMBO margins cv (\$85) PH \$150

430 ★★ **RW35 1968 Hooded Merganser**, gorgeous color and bright paper, VF NH cv (\$65) PH \$65

431 ★★ **RW38 1971 Cinnamon Teal, (2) Lower Right Plate Blocks of 4 with Pl. no.'s 171586 and 171587**, VF NH, great gum! cv (\$360) \$360

432 ★★ **RW39 1972 Emperor Goose**, nice, deep color, margins a little close at top and left, slight orange shift at right, F-VF NH cv (\$30) PH \$22

433 ★★ **RW41 1974 Wood Duck**, F-VF NH, very clean stamp cv (\$18) \$14

434 ★★ **RW42 1975 Decoy/Canvasback, Full Pane of 30, Upper Left Pl no. 172777**, slight wrinkle on upper right corner, selvage only, staple holes in selvage of top middle, VF NH cv (\$450) PH \$400

435 ★★ **RW43 1976 Canada Goose, Lower Left PNS no. 173030**, nice example, XF NH cv (\$12) \$15

436 ★★ **RW43 1976 Canada Goose, Upper Left, Upper Right, Lower Left and Lower Right Plate Blocks of 4**, VF to VF-XF NH, fresh! cv (\$200) \$210

437 ★★ **RW44 1977 Ross' Geese, Lower Right PNS no. 173205**, design is close at top with a couple of uneven perms, great color cv (\$10) \$10

438	**	RW44 1977 Ross' Geese, Matched Set of (4) PNS's each no. 173205, F-VF to VF NH, fresh cv (\$40)	\$55
439	**	RW45 1978 Hooded Merganser, very fresh, bright color and paper, nice large margins, XF-Superb NH cv (\$10)	\$20
440	**	RW45 1978 Hooded Merganser, Upper Right Plate Block of 4 no. 173331, VF NH cv (\$40)	\$40
441	**	RW46 1979 Green-winged Teal, Upper Right PNS no. 173422, three wide margins, very white, fresh paper, F-VF NH cv (\$12)	\$14
442	**	RW46 1979 Green-winged Teal, Lower Left Plate Block of 4 no. 173423, pretty block of 4, VF-XF NH cv (\$50)	PH \$50
443	**	RW47 1980 Mallard, Lower Right PNS no. 173492, VF NH cv (\$12)	\$10
444	**	RW47 1980 Mallard, Lower Right Plate Block of 4 no. 173493, VF-XF NH cv (\$60)	\$50
445	**	RW48 1981 Ruddy Duck, Upper Right PNS no. 173572, slight shift has the red slightly out of the hen's eye socket and the drake has exceptionally long lower "eye lashes", VF NH cv (\$12)	PH \$10
446	**	RW48 1981 Ruddy Duck, Upper Right Plate Block of 4 no. 173573, VF-XF NH cv (\$50)	\$50
447	**	RW49 1982 Canvasback, F-VF NH cv (\$15)	\$12
448	**	RW49 1982 Canvasback, Lower Right Plate Block of 4 no. 173672, F-VF NH cv (\$60)	\$42
449	**	RW50 1983 Pintail, Upper Right Plate Block of 4 no. 173767, F-VF NH cv (\$60)	\$60
450	**	RW51 1984 Wigeon, Upper Left Plate Block of 4 no. 173871, F-VF NH cv (\$50)	\$45
451	c**	RW51x 1984 50th Anniversary Special Printing, Single Position IX-2-25, VF NH, 1988 PFC certificate cv (\$225)	PH \$200
452	**	RW52 1985 Cinnamon Teal, Lower Left Plate Block of 4 no. 174350, VF NH cv (\$60)	\$50
453	**	RW53 1986 Fulvous Whistling Duck, Upper Left PNS no. 176845, looks like it was printed last week - so fresh! VF-XF NH cv (\$15)	\$14
454	**	RW53 1986 Fulvous Whistling Duck, (4) corners with PNS no. 176844, VF NH cv (\$60)	\$60
455	**	RW53 1986 Fulvous Whistling Duck, Upper Left Plate Block of 6 no. 176844, VF-XF NH cv (\$90)	\$115
456	**	RW54 1987 Redhead, Lower Right PNS no. 178171, very rich color, F-VF NH cv (\$17)	\$12
457	**	RW54 1987 Redhead, Lower Right Plate Block of 4 no. 178171, F-VF NH cv (\$70)	PH \$65
458	**	RW55 1988 Snow Goose, three large even margins, right side selvage attached, VF NH cv (\$17)	\$15
459	**	RW56 1989 Lesser Scaup, Upper Left Plate Block of 4 no. 182531, F-VF NH, almost VF cv (\$85)	\$75
460	**	RW57 1990 Black-bellied Whistling Duck, XF NH cv (\$20)	\$55
461	**	RW58 1991 King Eider, Upper Right PNS no. 188404, color bars in selvage, VF NH cv (\$30)	\$28
462	**	RW58 1991 King Eider, Upper Left Plate Block of 4 no. 188404, VF-XF NH cv (\$125)	PH \$125

463	**	RW59 1992 Spectacled Eider, Upper Right PNS no. 190493, VF-XF NH, very nicely centered, which is difficult on this issue cv (\$30)	PH \$34
464	**	RW59 1992 Spectacled Eider, Lower Right Plate Block of 4 no. 190493, F-VF NH cv (\$125)	\$100
465	**	RW60 1993 Canvasback, Lower Left PNS no. 191659, VF NH, very fresh! cv (\$27)	\$24
466	**	RW61 1994 Red-breasted Merganser, Upper Left Plate Block of 4 no. 193700, VF-XF NH, choice plate! cv (\$125)	PH \$110
467	**	RW61 1994 Red-breasted Merganser, Matched Set of (4) Plates no. 193700, VF-XF NH cv (\$500)	\$400
468	**	RW62 1995 Mallard, Upper Left Plate Block of 4 no. 195213, blue shade, VF-XF NH cv (\$135)	PH \$130
469	**	RW64 1997 Canada Goose, Upper Right Plate Block of 4 no. 196441, VF NH cv (\$95)	\$120
470	**	RW65 1998 Barrow's Goldeneye, Left side selvage attached, VF NH cv (\$45)	PH \$40
471	**	RW66 1999 Greater Scaup, Lower Left Plate no. Block of 4 no. 198654, VF-XF NH cv (\$175)	PH \$175
472	**	RW69 2002 Black Scoter, Lower Left PNS no. B1111 1, VF NH cv (\$35)	\$35
473	**	RW69 2002 Black Scoter, Matched Set of (4) Plate Blocks of 4, no. B 11111, VF-XF NH cv (\$500)	PH \$525
474	**	RW70 2003 Snow Goose, Upper Left Plate Block of 4 no. P111111, F-VF NH cv (\$125)	\$110

FEDERAL DUCK MINI-SHEETS

475	♦**	RW73b 2006 Mini-sheet, hand-signed by both artist and engraver, 2015 PSE graded certificate, SMQ (\$250)	PH \$250
476	♦**	RW74b 2007 Mini-sheet, SUPERB 98 NH, 2007 PSE graded certificate, SMQ (\$300)	PH \$300
477	♦**	RW75b 2008 Mini-sheet, SUPERB 98 NH, 2009 PSE graded certificate, SMQ (\$250)	\$250
478	♦**	RW76b 2009 Mini-sheet, GEM 100 NH, 2009 PSE graded certificate, SMQ (\$350)	PH \$350

FEDERAL DUCK PRESS SHEETS

479	**	RW72, 72c 2005 HOODED MERGANSER, CROSS GUTTER BLOCK OF 16 WITH (4) PLATE BLOCKS OF 4 PL NO. S11111, FROM PRESS SHEET, XF-Superb NH, only 100 full sheets issued, rare thus! cv (\$2995)	PH \$2500
480	**	RW72A 2005 Hooded Merganser, PSA Type, Vertical Imperforate Pairs Lower Right sheet corner with Pressman's cut marks in selvage, from Press Sheet, VF-XF NH	PH \$325
481	**	RW73P 2006 Ross' Goose, Vertical Strip of 4 with Horizontal Gutter between, only from Press Sheet, VF-XF NH, scarce! cv (\$190)	PH \$190
482	**	RW73 2006 Ross' Goose, Vertical Strip of 4 with Horizontal Gutter and color ducks, from Press Sheet, VF-XF NH cv (\$225)	PH \$225
483	**	RW73 2006 Ross' Goose, Vertical Plate Blocks with gutter between, only from Press Sheet, VF-XF NH, scarce! cv (\$325)	PH \$325

- 484 ** RW73 2006 Ross' Goose, Horizontal Plate Blocks of 4 with Vertical Gutter Top and Bottom (4 Plates), from Press Sheet, VF-XF NH cv (\$650) PH \$650
- 485 ** RW73PS 2006 ROSS' GOOSE, (4) PLATE BLOCKS OF 6 WITH ALL CORNER OF PL NO. S1111-1 AND COLOR DUCKS, all VF-XF NH, choice and scarce! cv (\$1100)ex PH \$1100
- 486 ** RW73 2006 ROSS' GOOSE, CENTER GUTTER BLOCK OF 16, ONLY FROM PRESS SHEET, RARE offering, 250 sheets issued, very scarce, VF-XF NH cv (\$995) PH \$1000

FEDERAL REMARQUES

- 487 - RW73R 2006 Ross' Goose, Press Sheet Horizontal Pair, with center gutter that has been filled with a beautiful color remarque of a Ross' Goose, by Sherrie Russell Meline. The original art is signed by the artist, F-VF NH -
- 488 - RW73AR 2006 Ross' Goose, Press Sheet Self-Adhesive Block of Three, the center stamp features a large, color Ross' Goose remarque by Sherrie Russell Meline. A full goose nestled amongst reeds with a gray-hued background. Signed twice by the artist, once in the original art which is also dated 2021, and a larger signature below the stamp, VF NH -

FEDERAL DUCK ERRORS

- 489 ** RW37var 1970 Ross' Geese, with red color shift, color shifted left, F-VF NH cv (\$65) PH \$95
- 490 ** RW39var1 1972 Emperor Goose color shift variety (2), orange mis-registration, both forward and backward on two examples, VF NH, leaves part of Geese's feet without color cv (\$190) PH \$210
- 491 ** RW40var 1973 Steller's Eiders, all with image shifts (4), note the \$5 from bottom to top, F-VF to VF NH cv (\$72) PH \$110
- 492 ** RW42var 1975 Canvasback and Decoy, Lower Left PNS no. 172775, with brown color shift, F-VF NH cv (\$15) PH \$75
- 493 ** RW46var 1979 Green-winged Teal, Lower Right Sheet corners, (1) with PI no., both showing orange color shifts, one shift 1/2mm left and other 1/2mm right, both VF-XF NH cv (\$25) PH \$60
- 494 ** RW47var1 1980 Mallards, with green color shift, VF NH PH \$50
- 495 ** RW47var 1980 Mallards (2), Top stamp with extended "green head", bottom with white showing, color mis-registration, both VF NH PH \$60
- 496 ** RW48var 1981 Ruddy Duck, Upper Right Plate Block of 4 no. 173573, red color shift causes eyes to be almost out of socket, VF-XF NH cv (\$50) PH \$80
- 497 ** RW51var 1984 American Wigeon, with orange color shift, F-VF NH, shift moves eye color to the right, making their eyes look out-of-socket on both birds, pulled upper left corner perf PH \$30
- 498 ** RW52var 1985 Cinnamon Teal, with cinnamon color shift downward about 1/2mm, F-VF NH cv (\$50) . PH \$50
- 499 ** RW52var 1985 Cinnamon Teal, Lower Left Plate Block of 4 no. 174343, with color shift, cinnamon color with significant 3/4mm shift to left, giving duck extra forehead and breast, VF NH cv (\$60) PH \$100

- 500 ** RW53var 1986 Fulvous Whistling Duck (2), both with black engraved color misregistrations; "high eye" and "low eye", VF NH cv (\$25) PH \$60
- 501 ♦** RW57a 1990 Black-bellied Whistling Duck ERROR, back inscription omitted, XF-Superb 95 NH, 2015 PSE graded certificate (SMQ does not list error value) cv (\$300) PH \$450

- 502 ♦◊ RW57b 1990 BLACK-BELLIED WHISTLING DUCK, INSCRIPTION PRINTED ON PAPER NOT GUM, GEM 100 USED, 2010 PSE graded certificate, only 100 known examples, per PSE 10/09/14 PH \$1000

- 503 ** RW62var 1995 Mallards, two distinct colors; lavender and greenish, VF-XF NH cv (\$65) PH \$100
- 504 ** RW63var 1996 Surf Scoter, with broken inner right frame line, VF NH PH \$65
- 505 ** RW64v2 1997 Canada Goose, short breast feather flaw variety, XF-Superb NH cv (\$65) PH \$80

STATE REMARQUES

- 506 - AZ9R Arizona 1995 Wigeon, with a color remarque of a wigeon bust in the upper left, remarked and signed right above the Plate no. 000003, by artist Sherrie Russell Meline. A couple of paint spots, one on the left, the other on the "o" in Arizona. Nice work by Meline on her fourth of 19 Arizona stamps, VF NH PH \$150
- 507 - IA35R Iowa 2006 Ring-necked Duck, large color remarque by Sherrie Russell Meline, bottom right stamp signed by Meline, and her original art is initialed. Scott catalog value is \$27.50 per stamp. The remarque makes this pane unique, VF NH PH \$400
- 508 - ID7R Idaho 1993 Common Goldeneye, with full color remarque, by Sherrie Russell Meline. A large goldeneye in the left selvage extends onto the stamp. Signed by the artist in the bottom selvage, VF NH PH \$175
- 509 - NV9R Nevada 1987 Bufflehead, color remarque in tab by Sherrie Russell Meline, also signed by artist Meline, VF NH PH \$175
- 510 - NV9R Nevada 1987 Bufflehead, Pane of 4 with color remarque by stamp artist Sherrie Russell Meline. The selvage of the bottom stamp features a swimming bufflehead and is initialed by the artist, who also autographed the bottom stamp of the pane. Scott Catalogue for the full pane is \$80. The original art adds extra value, VF NH PH \$210
- 511 - NV22hR Nevada 1999 Canvasback and Tule decoy, full tab attached with color remarque of canvasback drake and hen, signed and remarked by Sherrie Russell Meline, The Tule decoy was discovered by archeologists in 1924 during an excavation at Lovelock Cave. It was estimated to be 2,000 years old. Nevada designated the Tule duck decoy as the official state artifact in 1995. (It is also pictured on NV1 by Larry Hayden). VF NH PH \$195
- 512 - NV31R Nevada 2009 Canada Goose, signed and color remarque by Sherrie Russell Meline, VF NH PH \$175
- 513 - OD13bR Ontario 2005 Canada Goose, Booklet of One, with color remarque filling the lower right corner, signed and remarked by artist Sherrie Russell Meline, artwork also initialed by Meline. Booklet cover included, VF NH PH \$150

- 514 - **OD13S/SR Ontario 2005 Canada Goose, Pane of 4, with color remarque in lower right selvage**, remarqued and signed by artist in lower left selvage. Booklet cover included, VF NH PH \$195
- 515 - **OD16bR Ontario 2008 Gadwall, Booklet of One, with color remarque filling the lower right selvage**, signed and remarqued by artist Sherrie Russell Meline, booklet cover included, VF NH PH \$150
- 516 - **TXQ14R Texas 2003 Quail, with color remarque of a quail head in upper left**, signed in top selvage and remarqued by artist Sherrie Russell Meline, VF NH PH \$125

ARTIST SIGNED FEDERAL STAMPS

- 517 - **RW43(s) 1976 Canada Goose, sba Alderson Magee**, (deceased), VF NH cv (\$125) PH \$125
- 518 ** **RW44(s) 1977 Ross' Goose, sba Martin A. Murk**, (deceased), perf thin upper right corner with creased perf, ink offset on gum, F-VF NH cv (\$95) \$35
- 519 - **RW45(s) 1978 Hooded Merganser, sba Albert Gilbert**, VF NH cv (\$35) \$35
- 520 - **RW46(s) 1979 Green-Winged Teal, sba Ken Michaelson**, (deceased), F-VF NH cv (\$150) \$150
- 521 - **RW47(s) 1980 Mallard, sba Richard Plasschaert**, VF NH cv (\$35) \$35
- 522 - **RW48(s) 1981 Ruddy Duck, sba John S. Wilson**, (deceased), VF NH cv (\$350) PH \$350
- 523 - **RW49(s) 1982 Canvasback, sba David A. Maass**, F-VF NH cv (\$80) \$80
- 524 - **RW50(s) 1983 Pintail, sba Phil Scholer**, VF NH, slight ink offset on gum cv (\$35) PH \$35
- 525 - **RW51(s) 1984 American Wigeon, sba W.C. Morris**, F-VF NH cv (\$35) PH \$35
- 526 - **RW52(s) 1985 Cinnamon Teal, sba Gerald Mobley**, VF NH cv (\$35) PH \$35
- 527 - **RW53(s) 1986 Fulvous Whistling, sba Burton E. Moore, Jr.**, (deceased), VF NH, signed without "JUNR" cv (\$125) PH \$125
- 528 - **RW55(s) 1988 Snow Goose, sba Daniel Smith**, F-VF NH cv (\$35) \$35
- 529 - **RW62(s) 1995 Mallard, sba Jim Hautman**, VF NH cv (\$45) \$45
- 530 - **RW64(s) 1997 Canada Goose, sba Robert Hautman**, Upper Left PNS no. 196441, VF NH cv (\$45) \$45

STATE DUCK STAMPS

- 531 ○ **CA2 California 1972 Canvasbacks without backing**, back is toned with very slight bleed through, serial no. D 0564-25, F-VF unsigned cv (\$150) PH \$120
- 532 ** **CA6, 7A California 1976 and 1977 Panes of 5**, the 1977 is the revalued issue, Fine NH with some usual gum bleed through cv (\$172) \$150
- 533 (*) **CA8 California 1978 Hooded Mergansers**, off-backing, VF NG, tiny scuff (pressed out indentation), clean, very attractive cv (\$185) PH \$50
- 534 ** **DE3 Delaware 1982 Canada Geese, Bottom Plate Block of 4 no. 865**, VF NH cv (\$200) \$200

- 535 ** **FL3 Florida 1981 Widgeon, Vertical Pair Position Piece**, middle stamps from booklet of 5, XF NH cv (\$30) \$35
- 536 ** **FL18A Florida 1981, alternate spelling of "Common Golden Eye Duck"**, VF NH cv (\$125) PH \$125
- 537 * **IL1-3 Illinois 1975-77 Waterfowl Stamps**, VF LH, SCV for mint is \$575 (used is \$160). These are all nice stamps, unsigned on faces cv (\$575) PH \$285
- 538 ** **IL1 Illinois 1975 Mallard**, VF NH, natural straight edge at bottom, very good color cv (\$325) PH \$275
- 539 ** **IL2 Illinois 1976 Wood Ducks**, VF-XF NH cv (\$150) ... \$150
- 540 ** **IL3 Illinois 1977 Canada Goose**, VF NH cv (\$100) PH \$100
- 541 ** **IL10 Illinois 1984 Blue-winged Teal, Vertical Pair Position Piece**, Lower right vertical pair of sheet of 10 serial no's 096561-570, these being serial no's 096564 and 56 cv (\$120) PH \$120
- 542 ** **IA4 Iowa 1975 Canada Geese**, F-VF NH cv (\$95) \$80
- 543 ** **IA8 Iowa 1979 Buffleheads**, VF NH, fresh cv (\$250) PH \$230
- 544 ** **IA9v2 Iowa 1980 \$5 Redheads, with "Iowa Trout Stamp" printed on the bottom selvage**, VF-XF NH ... \$85
- 545 ** **MT7c Montana 1992 Green-headed hen error**, only 700 stamps exist, one per pane, VF NH cv (\$75) \$75
- 546 ** **NH2H New Hampshire 1984 Mallard**, missing portion of tab that was stapled into the booklet, F-VF NH cv (\$110) \$50
- 547 ** **NJ1, 1A New Jersey First of State 1984 Canvasback, Resident and Non-Resident Set**, F-VF NH cv (\$85) ... \$80
- 548 ** **NJ1A New Jersey Non-Resident 1984 Canvasback**, F-VF NH cv (\$50) \$50
- 549 ** **NJ17v New Jersey 2000 \$5 Resident, "DISABLED VETERAN NO FEE" Overprint**, stamp pictures Canvasbacks and the Statue of Liberty, by Jim Hautman, VF NH cv (\$30) \$25
- 550 ** **NJ19v New Jersey 2002 \$5 Resident, Disabled Veterans Overprint "95SV"**, stamp pictures Wood Ducks by Jim Hautman, VF NH cv (\$30) \$25
- 551 ** **ND2v5 North Dakota 1983 \$9 Mallards, Vertical Pair, bottom stamp with serial number into the design**, this occurs only on the bottom row of the pane, only 5 known, F-VF NH PH \$300
- 552 ** **OR1-5 Oregon 1984-1988 Issues**, Oregon features consistently beautiful artwork, VF NH cv (\$90) \$98
- 553 ** **SC2h South Carolina 1982 Hunter Type**, VF-XF NH cv (\$400) PH \$400
- 554 ** **SC3c1 SOUTH CAROLINA 1983 \$5.50 PINTAILS, HORIZONTAL IMPERFORATE PAIR**, includes reverse printing, one of 30 known, F-VF NH PH \$2500
- 555 ** **TX1 Texas 1981 Mallards, Complete Booklet of 10**, VF NH, excellent condition with (accounting?) label on front cv (\$250) PH \$250
- 556 ** **WV, WV2A West Virginia 1988 Resident and Non-Resident**, VF NH cv (\$28) \$25
- 557 ** **WY2 Wyoming 1985 Canada Goose**, VF NH cv (\$50) PH \$50

GOVERNOR'S EDITIONS

558	**	AK5G Alaska 1989 Governor's Edition , VF NH, 1,050 stamps issued cv (\$100)	\$95
559	**	AK10G Alaska 1994 Governor's Edition , VF NH, only 550 stamps issued cv (\$90)	\$90
560	**	AZ3G Arizona 1989 Governor's Edition , VF NH, 1,900 stamps issued cv (\$75)	\$60
561	-	AZ7G(s) Arizona 1993 Hand-signed Governor's Edition , by Governor Fife Symington, 200 stamps issued, VF NH cv (\$150)	PH \$145
562	**	AR18Gs Arkansas 1998 Hand-signed Governor's Edition , signed by Governor Mike Huckabee, 250 stamps issued, F-VF NH cv (\$250)	PH \$225
563	-	CO1G(s) Colorado 1990 Hand-signed Governor's Edition , by Governor Roy Romer, 1,280 issued, VF NH cv (\$150)	PH \$135
564	**	CT1G Connecticut 1993 Governor's Edition , VF NH, 1,400 stamps issued cv (\$70)	\$65
565	**	DE11G Delaware 1990 Governor's Edition , Green-winged Teal, \$5+\$50 face value, 3,750 stamps issued cv (\$85)	\$75
566	**	MT4G Montana 1989 Centennial Governor's Edition , VF NH, 1,050 stamps issued cv (\$140)	PH \$125
567	-	NH7G,G(s),G(c),G(as) New Hampshire 1989 Governor's Edition, Set of (4) , includes mint stamp, stamp signed by Gov. Judd Gregg, stamp signed by artist Robert Steiner and a contingency stamp with no serial no., VF NH cv (\$675)	PH \$600
568	**	OK10G Oklahoma 1989 Governor's Edition , VF NH cv (\$125)	\$110
569	**	SC10G South Carolina 1990 10th Anniversary Governor's Edition , VF-XF NH cv (\$82)	\$75
570	**	SC10G South Carolina 1990 Wood Ducks 10th Anniversary Governor's Edition Pair , VF-XF NH cv (\$165)	\$150

CONSERVATION

571	**	ABE3P 1985 American Bald Eagle Foundation, Horizontal Imperforate Proof Pair, with large top selvage and printer marks , features artwork of an eagle nesting with two chicks by Donald Blakney cv (\$40)	PH \$32
572	**	AWF2P Alabama Wildlife Federation 1984 Imperforate Proof , VF NH	\$16
573	**	BRSF3P Bass Research Foundation 1983 Horizontal Imperforate Pairs (2) , one missing red and blue colors, VF NH NH	PH \$95
574	**	CCA1P 1983 Gulf Coast Conservation Association (later Coastal Conservation) First Issue Imperforate Vertical Proof Pair, with bottom selvage , features artwork of an angler and redfish by famous Texas artist John Cowan (deceased). Catalog value of a mint perf stamp is \$7	\$50
575	**	IAH7P Iowa 1985 \$3 Habitat, Horizontal Imperforate Proof Pair , pictures a rabbit by Bethany Caskey, VF NH	\$25
576	**	LACR1P Lewis and Clark 1982 Rangers, Horizontal Imperforate Proof Pair, with top selvage , pictures Ring-necked Ducks, by Les Kouba, VF NH	\$50

577	(*)	MIT9 Michigan Trout 1956 , Fine NG cv (\$35)	\$25
578	**	MN-LS1P Minnesota Association of Farmers, Land-owners and Sportsmen, 1982 Horizontal Imperforate Proof Pair , bottom selvage pair with Plate no. 4031, VF NH	\$20
579	**	NH-HF, NH-HV New Hampshire 1961 Hunting Validation and 1961 Hunting and Fishing Validation stamps , hunting validation stamp on light olive paper, hunting and fishing validation on light pink paper, each has \$1 face, straight edge at top, both VF NH cv (\$16)	\$16
580	**	ND-CC1 North Dakota 1945 50¢ Crow Control , sold to fund a bounty on crows. Straight edge at top (all stamps have at least one straight edge), F-VF NH, Ira Cotton catalog value cv (\$20)	\$20
581	**	ORUB2-13 Oregon Upland Game Bird stamps (12) , all are PNS except ORUB13, nice set, VF NH cv (\$350)	ex PH \$275
582	**	PASP2 Pennsylvania 1993 \$5 State Parks, Horizontal Imperforate Proof Pair , pictures Valley Forge by Rob Stine, VF NH	\$25
583	**	SD-A17 South Dakota 1975 \$8.50 Resident Antelope , black on red, Fine NH, Ira Cotton catalog value cv (\$16)	\$16
584	**	SD-A17var South Dakota 1975 \$8.50 Resident Antelope , black on red, "8.50" partially double printed, F-VF NH	PH \$30
585	**	SD-A20 South Dakota 1977 \$12 Resident Antelope , black on pink, F-VF NH, Ira Cotton catalog value cv (\$25)	PH \$25
586	**	SD-A21-23 South Dakota 1978-1980 Resident Antelope , 1978 \$12 green, 1979 \$12 pink, and 1980 \$15 orange, F-VF NH, Ira Cotton catalog value cv (\$24)	\$24
587	**	SD-AA22 South Dakota 1980 \$15 Archery Antelope , two panes of 5 with consecutive numbers (0686-0695). Slight color variety, the lower numbered pane is lighter pink. In addition, the rouletting between stamps 0688 and 0689 did not go completely through the paper. Priced at regular catalog of \$12 per stamp, F-VF NH, Ira Cotton catalog value cv (\$120)	PH \$120
588	**	SD-AAN37 South Dakota 1980 \$75 Non-Resident Archery Antelope , black on green, no catalog number in Cotton, F-VF NH cv (\$20)	\$20
589	**	SD-BG17 South Dakota 1975 \$8.50 Resident Big Game , black on red, F-VF NH, Ira Cotton catalog value cv (\$13)	\$13
590	**	SD-BG20 South Dakota 1978 \$12 Resident Big Game , black on white, VF NH, very fresh and clean, Ira Cotton catalog cv (\$10)	\$10
591	**	SD-BG21, SD-BGN21 South Dakota 1979 Big Game, \$12 Resident and \$50 Non-Resident , F-VF NH, Ira Cotton catalog value cv (\$36)	PH \$36
592	**	SD-BG21v South Dakota \$12 Resident Big Game, Misperf Pair , two rows of perforations separate the stamps with a number of blind perms. Minor variety cv (\$22)	\$30
593	**	SD-DA21, SD-DAN21 South Dakota 1980 Resident and Non-Resident Archery Deer , \$15 Resident orange and \$75 Non-Resident pink, F-VF NH, Ira Cotton catalog value cv (\$33)	\$33

594	**	SD-DAER2v South Dakota 1968 \$7.50 Special Resident East River Archery Deer variety, red serial number and year shifted downward , The two "1968" disappear into the words "state" and "Dakota" and "7.50" partially double printed near the word "Fish" at the bottom of the stamp cv (\$35) PH \$60	609	**	SD-GT2 South Dakota 1948 \$3 Game Transportation stamp with BEADLE Co. overprint , straight edge at top and left, F-VF NH, Ira Cotton catalog value cv (\$30) \$30
595	**	SD-DAER2v South Dakota 1968 \$7.50 Special Resident, East River Archery Deer, Vertical Pair with double row of perforations , Catalog value for two mint stamps (Cotton) is \$70, F-VF NH PH \$100	610	**	SD-GT2 South Dakota 1948 \$3 Game Transportation stamp with FAULK Co. overprint , perfed on all four sides, F-VF NH, Ira Cotton catalog value cv (\$30) . PH \$30
596	**	SD-DB1, SD-DBN1 South Dakota 1980 Resident and Non-Resident Black Hills Deer , \$15 Resident on tan, \$75 Non-Resident on blue, F-VF NH, Ira Cotton catalog value cv (\$41) \$40	611	**	SD-GT3 South Dakota 1949 \$3 Game Transportation stamp with BEADLE Co. overprint , perfed on all four sides, Fine NH, Ira Cotton catalog value cv (\$30) \$30
597	**	SD-DB3 South Dakota 1982 \$15 Resident, Black Hills Deer Misperforation , an additional row of perforations runs diagonally through the middle of the stamp! Catalog value (Cotton) for a mint stamp is \$20, F-VF NH . . PH \$50	612	**	SD-PRN10 South Dakota 1974 \$5 Non-Resident Predator License, Pane of 5 , black on green, Fine NH, Ira Cotton catalog value cv (\$50) PH \$50
598	**	SD-DE17, 19 South Dakota 1975 and 1976 Special Resident Eastern Deer , \$8.50 black on yellow, \$12 black on green, F-VF NH, Ira Cotton catalog value cv (\$28) \$28	613	⊙	SD-SG5v South Dakota 1964 \$2 Resident, Small Game, with red color shift , the two year dates and serial number are shifted up, hunter signed, unusual PH \$30
599	**	SD-DE21-22 South Dakota 1978 and 1979 \$12 Special Resident Eastern Deer , black on blue, and black on orange, F-VF NH, Ira Cotton catalog value cv (\$16) \$16	614	⊙	SD-SG6v South Dakota 1965 \$2 Resident, Small Game, with red color shift , the two year dates and serial number are shifted downward, hunter signed \$30
600	**	SD-DER1 South Dakota 1980 \$15 East River Deer , black on yellow, VF NH cv (\$18) \$18	615	**	SD-SG14 South Dakota 1977 \$3 Resident Small Game , black on yellow, F-VF NH, Ira Cotton catalog value cv (\$10) PH \$10
601	**	SD-DER1a South Dakota 1980 \$15 East River Deer, missing serial number , unpriced in Cotton catalog, NH PH \$50	616	**	SD-SG17 South Dakota 1976 \$3 Resident Small Game , black on gray, Fine NH, Ira Cotton catalog value cv (\$8) . \$8
602	**	SD-DER17v South Dakota 1975 \$58.50 Special Resident Eastern Deer Triple variety, Vertical Pair with a double row of perforations , the second one running through the bottom frame of the top stamp. In addition, the top stamp has the large serial number font (cv \$10) while the bottom stamp has the small serial number font (cv \$20). The years of the top stamp are shifted left, F-VF NH cv (\$30) PH \$50	617	**	SD-SG20 South Dakota 1979 \$3 Resident Small Game , black on red, F-VF NH, Ira Cotton catalog value cv (\$6) . \$6
603	**	SD-DER17av South Dakota 1975 \$8.50 Special Resident Eastern Deer Misperf Vertical Top Tab Pair , perforations run right above the two "1975" dates. Well into the stamp design, F-VF NH cv (\$20) \$35	618	**	SD-SG24v South Dakota 1983 \$6 Resident, Small Game Misperforation Pair , close at top and then downward diagonally between the stamps. Catalog value for mint stamps (Cotton) is \$26, NH PH \$50
604	**	SD-DWP11-13 South Dakota 1976-1978 \$12 Resident West River Prairie Deer , pink, green, and yellow with black printing, F-VF NH, Ira Cotton catalog value cv (\$22) \$22	619	**	SD-SGN16 South Dakota 1975 \$25 Non-Resident Small Game , black on red, F-VF NH, Ira Cotton catalog value cv (\$28) \$28
605	**	SD-DWP14, SD-DWPN13 South Dakota 1979 Resident and Non-Resident West River Prairie Deer , \$12 Resident, black on green, and \$50 Non-Resident, black on white, F-VF NH, Ira Cotton catalog value cv (\$23) \$23	620	**	SD-SGN18 South Dakota 1977 \$30 Non-Resident Small Game , black on yellow, Fine NH, Ira Cotton catalog value cv (\$35) PH \$35
606	**	SD-E15 South Dakota 1979 Special Resident Elk Permit , black on tan-yellow, F-VF NH, Ira Cotton catalog value cv (\$50) PH \$50	621	**	SD-SGN20 South Dakota 1979 \$30 Non-Resident Small Game , black on yellow, F-VF NH, Ira Cotton catalog value cv (\$20) \$20
607	**	SD-FS9v South Dakota 1988 Resident Free Senior Fishing, misperfed vertical pair, top tab attached , slightly diagonal perforations cut into the words at the top of the stamp, and a partial part of the wording appears on the bottom stamp, F-VF NH cv (\$20) PH \$40	622	**	SD-SGN21 South Dakota 1980 \$35 Non-Resident Small Game , black on orange, F-VF NH, Ira Cotton catalog value cv (\$30) \$30
608	⊙	SD-GT1a South Dakota 1947 \$3 Game Transportation stamp with BEADLE Co. overprint , straight edge at top and left, F-VF Used, Ira Cotton catalog value for mint, used unpriced cv (\$30) \$20	623	**	SD-TKS14 South Dakota 1976 \$2.00 Resident Spring Wild Male Turkey , black on green, Fine NH, Ira Cotton catalog value cv (\$13) \$13
			624	⊙	SD-W1 South Dakota 1949 Resident Waterfowl, Vertical Safety Paper , F-VF Used, Ira Cotton catalog value cv (\$90) \$80
			625	**	SD-W1 SOUTH DAKOTA 1949 RESIDENT WATERFOWL, VERTICAL SAFETY PAPER , F-VF NH, original gum NH, but slightly soiled at upper left and what might be a paper clip inden-tation on the back, which does not affect the face whatsoever, Ira Cotton catalog value cv (\$1800) PH \$1200
			626	⊙	SD-W2 South Dakota 1950 Resident Waterfowl, Vertical Safety Paper , F-VF Used, Ira Cotton catalog value cv (\$70) PH \$60
			627	**	SD-WBCG1 South Dakota 1974 Bennett Co. Canada Goose, Low Serial no. , VF NH, Ira Cotton catalog value cv (\$65) PH \$50

- 628 ** SD-WBCG3 South Dakota 1976 Bennett Co. Canada Goose, black on blue, Fine NH, Ira Cotton catalog value cv (\$30) \$30
- 629 ** SD-WBCG4 South Dakota 1977 Bennett Co. Canada Goose, black on goldenrod, Fine NH, Ira Cotton catalog value cv (\$25) \$25
- 630 - SD-WPCG8b South Dakota 1981 Prairie Canada Geese, tag with HAAKON Co. overprint, black on green, VF NH cv (\$45) PH \$45
- 631 ** TXA1-41 Texas Archery Stamps 1975-2015, a complete run, you can view each stamp design at shduck.com. A variety of design picturing arrowheads, Indians, buffalo, deer, hunters, and more. Would make a beautiful framed set for the archery enthusiast, VF NH cv (\$334) . . .ex PH \$250
- 632 ** TXD1//34 Texas White-winged Dove stamps 1971-2004 (except the scarce 1984 issue), All stamp images available at shduck.com. A nice set, with great variety in the designs, VF NH cv (\$262)ex PH \$180
- 633 ** VA-TZ1 Virginia 1956 Tazwell County \$1.00 Bear-Deer Damage, perfed all four sides, only 6 stamps per pane of 15 are fully perforate, Cotton Catalog value \$40, VF NH cv (\$40) PH \$25

FEDERAL DUCK PRINTS

- 634 - RW39 1972 Federal Duck Print, 2nd Edition, sba Arthur M. Cook (deceased), w/o stamp, edition of 900, no. 543, Emperor Geese, full, large margins and in excellent condition cv (\$550) PH \$550
- 635 - RW40 1973 FEDERAL DUCK PRINT, FIRST EDITION, sba Lee LeBlanc, without stamp or folio, previously framed or matted and has 1/2" "sun line" around the image, edition of 1,000, no. 616; Steller's Eider cv (\$2400) PH \$1200
- 636 - RW43 1976 FEDERAL DUCK PRINT, Scratchboard Edition with 2" x 1 3/8" scratchboard of a Trumpeter Swan head, sba Alderson Magee, (deceased) w/o stamp or folio, edition of 1,000 (this no. DS461), Canada Goose. Scratchboard mounted in a beautiful dark, dark red brown frame with intricate flower details and with light speckled gray mat cv (\$1300) PH \$1000
- 637 - RW50 1983 FEDERAL DUCK PRINT, with gold medallion, sba Phil Scholer, with artist signed stamp but without folio, edition of no. 2,187/6,700, Pintails, attractively mounted in simple black wood frame with white mat cv (\$700) PH \$700
- 638 - RW52 1985 Federal Duck Print, with gold medallion, sba Gerald Mobley, without stamp, edition of 6,650, no. 1899, Cinnamon Teal cv (\$275) PH \$275
- 639 - RW55 1988 Federal Duck Print, with silver and gold medallion, sba Daniel Smith, with AS stamp, edition of 6,500, Snow Geese, mounted in "ripe fig" brown over bluish gray double matting with black trim, shrinkwrapped cv (\$285) PH \$270

STATE DUCK PRINTS

- 640 - AK1 1985 Alaska First of State Duck Print, sba Daniel Smith, with mint stamp, Emperor Geese \$500
- 641 - AK2 Alaska 1986 State Duck Print, sba James Meger, (deceased), with mint stamp, edition of 3,665, no. 793, Steller's Eiders, mounted in light blue over midnight blue double matting with black trim, shrink-wrapped PH \$300
- 642 - AK4 Alaska 1988 State Duck Print, sba Jim Beaudoin, with mint stamp, edition of 5,500, no. 793, Trumpeter Swans, mounted in beige over blue green double matting with black trim, shrink-wrapped PH \$200
- 643 - AZ1 1987 Arizona First of State Duck Print, sba Daniel Smith, with mint and artist signed stamps, Pintails, mounted in marbled tan over deep brown double matting, shrink-wrapped PH \$225
- 644 - AR4 Arkansas 1984 State Duck Print, sba Larry Hayden (deceased), with mint stamp and folio, edition of 7,200, no. 4,865, Bois D'Arc Pintails PH \$350
- 645 - CA4 1974 California State Duck Print, Executive Edition, sba Paul B. Johnson (deceased), with artist signed stamp on damaged backing, nfai, edition of 150, no. 84, White-fronted Geese PH \$400
- 646 - FL2 Florida 1980 State Duck Print, sba Ernest C. Simmons, with mint stamp and folio, edition of 1,000, no. 494, Pintails PH \$150
- 647 - ID1 Idaho 1987 First of State Duck Print, sba Rob Leslie, with mint stamp, Cinnamon Teal, mounted in light brown over Indian red double matting, shrink-wrapped, no. 2199/13,200 PH \$175
- 648 - TN5 Tennessee 1983 State Duck Print, sba Thompson Phillip Crowe, IV, without stamp, edition of 1,000, no. 464, Pintails PH \$150
- 649 - CD3 Canada 1987 Duck Print, with gold medallion, sba George McLean, with mint stamp, edition of 3,450, no. 1119, Canada Geese, mounted in brown over brownish black double matting, shrinkwrapped PH \$300
- 650 - RD1 1989 Russia First of Country Print, sba Ivan Kozlov, with mint stamp, edition of 5,000, Mandarin Ducks PH \$300

CONSERVATION PRINTS

- 651 - MNP2 Minnesota 1984 State Pheasant Print, sba Mario Fernandez, without stamp, in faux leather, padded folio, edition of 4,650, no. 4199. Print depicts male and (2) female pheasant in a soybean field PH \$150

END OF SALE!

Thank you for participating in our auction!

**Auction results available Friday, March 8, 2024.
Results hotline (281) 493-0566.**



411



554



634

VIEW PHOTOS AND BID ON LINE — SHPACTIONS.COM

Sam Houston Philatelics

281-493-6386 • HOUSTON, TEXAS